

WELLINGTON
NZ
FRINGE
ARTS FESTIVAL

28 FEBRUARY — 21 MARCH
EVENT PROGRAMME



Fringe is Thirty.

Fringe is Flirty.

Dive in to 23 days of a delicious assault to every sense as you journey through our festival of extraordinary art from countless creators in multiple forms.

Leaf through these pages to discover the 150+ independent, self produced, self funded works being offered up to entertain and enchant. Pick a genre you like, pick a thing at random, take a recommendation. Be daring, be safe, but most of all, be joyous in your intent. Fringe artists put a lot of blood and guts and gold doubloons into creating their work.

Please support them with your bums on seats, your applause and your word of mouth recommendations.

Now come on, and show off your arts, Wellington.

xoxo
Your pals Team Fringe

Sameena Zehra Co-Director (Creative Producer)

Sasha Tilly Co-Director (Operations Director)

Rose Jang Festival Coordinator

Charlotte Wooster Marketing Manager

Phil Loizou Event Coordinator

Nicole Tan Emery Ticketing Manager

Ella Carling Volunteer Coordinator

Sophie Simons Pre-Festival Intern

Eric Holowacz CEO Creative Capital Arts Trust

Shauna Mendez Grants Coordinator

CCAT Board of Trustees

Tim Brown (Chair)

Philipa Bowron

Miranda Clayton

Jaime Hayden

Nigel Moody

Nick Simcock

Contact

T +64 4 212 4725

E welcome@fringe.co.nz

W fringe.co.nz

@nzfringe

L2, Toi Pōneke - West Building
65-69 Abel Smith Street,
Te Aro, Wellington 6011, New Zealand



DESIGN PARTNER

FESTIVAL PARTNERS

**Absolutely Positively
Wellington City Council**
Me Heke Ki Pōneke

CORE PARTNER



WEB PARTNER

FESTIVAL SPONSORS



KEY FUNDER



FUNDER



BEST MATE



FRINGE MATE



FRINGE MATE



FRINGE MATE



FRINGE MATE



DIPLO-MATES



MEDIA MATE



MEDIA MATE



HOUSING THE FRINGE



OFFICIAL BREW MATES



PRINT MATES



WELLBEING BUDDIES



WHEELY GOOD FRIENDS



TOY MATES



AUDIT MATE



SPIRIT MATES

AWARD SPONSORS



Fringe has basically been the only thing in my life since I first came to work here as an intern in 2014. Fringe has grown, and I've grown with it, and here I am, all grown up and now Operations Director of the Fringe that I have so many feelings about. A festival that has blossomed and expanded in a way only a city like Wellington — my home, the city I have spent my whole life in, a city that is fused to my soul — could possibly have encouraged. We're celebrating 3 whole decades of Fringe this year, that's one year longer than I have been on this earth. It's exciting and extraordinary and, also, there are changes afoot, so who knows what the next 30 years hold. Maybe the best is yet to come.

Sasha Tilly
Operations Director

I'm thrilled to be here, in this city that is the breeding ground of extraordinary art. I'm equal parts flummoxed & delighted that you have welcomed me as your new Creative Producer, and I hope I do you all proud. Now, go — buy tickets, support artists, shout about it on social media, send a postcard to that one hippy friend who hates the internet. Be inspired by creators, directors, performers. Soak it up, revel in it, be voluptuous in your joy. Later, when it's over, and we are all deliciously exhausted, come tell us what worked for you, what you want more of, how we can take NZ Fringe, Wellington from strength to strength, together.

Sameena Zehra
Creative Producer

We belong to you Pōneke, and you belong to us. Arohanui.

MESSAGE FROM THE CO-DIRECTORS



Wellington's Fringe Festival reinforces my pride in Wellington. It's quirky, fun, often ground-breaking and now an established highlight of our arts calendar.

This year is particularly special as it's the Festival's 30th birthday. Fringe may be an adult, but it still behaves like a delinquent teenager.

Fringe has grown and gone from strength to strength over the past 30 years. Fringe is a showcase for our emerging artists, a test-run for talent and ideas, a demonstration of our diversity, and an opportunity for performers to take risks. There's something for everyone. You'll love some shows, hate others and – at times – wonder what it's all about. Anything goes at Fringe! That's all part of the fun.

I encourage everyone to support our wonderful creative sector. We all need to buy tickets, attend freebies, and encourage our friends and family to do the same. Without our creatives, Wellington would revert to the grey city of yesteryear; something no one wants. So don't miss out, and do make the most of this Fringe Festival.

Nicola Young

Arts & Culture portfolio holder
Wellington City Councillor

It's been 30 years since New Zealand's first ever Fringe Festival — and what a long way the Festival has come.

Starting as a modest event at BATS Theatre in Wellington, Fringe is now a highlight in our national arts calendar. In 2020, our capital will host over 150 shows from a multitude of artists and practitioners from performers who live down your street, to the ones who have travelled over 16,000 kilometres to share their art. No matter where your interests lie, I know you will find something to surprise, entertain and challenge you in this year's programme.

As we celebrate three decades of Fringe, I want to acknowledge the important role the Festival plays in supporting and nurturing our future talent. For three weeks, audiences come together

to get a taste of art that pushes boundaries, asks questions and breaks convention. For those three weeks anything goes, giving artists the chance to test their skills and hone works alongside their audiences. I encourage you to experience the magic on offer at Fringe 2020.

Finally I'd like to thank everyone who has worked behind the scenes over the last 30 years to make Fringe what it is today. I look forward to seeing how the Festival grows and evolves in the decades to come.

Rt Hon Jacinda Ardern

Minister for Arts, Culture and Heritage
Prime Minister of New Zealand





PROUDLY HELPING
CREATIVITY TAKE FLIGHT

FRINGE MATE 2020

Fringe 2020; the biggest yet.

Fringe provides a platform for artists to step up, for shows to be developed, for relationships to be formed, and for audiences to experience the thrill of new works. Success breeds success and helps justify the backing Fringe has won from Wellington City Council, CNZ, Australian High Commission, Wellington Community Trust, and our many commercial sponsors, Inject Design, NV Interactive, Wellington Airport, The Wellington Company, Resene, and many others (see page 02). I'm glad I can mention Australia to show that although Fringe is quintessentially Wellington, the international links exist and are very important. A measure of success is how our "Pick of the Fringe" go in Australia, USA, UK. Similarly, many of the shows I've enjoyed over the years started life in Adelaide, Edinburgh or elsewhere. One highlight of Fringe 2019 was the huge increase in audience. If you are reading this

as a "Fringe Virgin", there are two things to keep in mind; each Fringe production is an entrepreneurial experiment. The artistic equivalent of a start-up. You may be about to witness Steve Jobs kicking off Apple. Possibly. But more importantly, you are participating in a creative process. The Arts (even more than business) needs new ideas and new energy. The 30th Fringe Festival will have plenty of both.

Fringe 2020 is also goodbye, thank you, and hello. Hannah Clarke has handed over the reins after seven brilliant years as Festival Director. Sameena Zehra and Sasha Tilly are co-directors for 2020 and beyond. The CCAT are so grateful for Hannah's achievements and just as proud of who has now accepted the baton.

Tim Brown, Chair
Creative Capital Arts Trust



What it feels like here is creative, expressive, free, provocative & bold.

Twelve years ago I left this hilly harbour town for overseas destinations and curious creative opportunities. It's been a grand odyssey, but not a day has gone by where I didn't think about life in New Zealand and what it feels like to be a Wellingtonian. Often my nostalgic thoughts abroad brought me back with memories of festivals, creative projects, music venues, live theatre, and the other extraordinary creative experiences I had here. Many times, they brought me to Fringe and recollections of the people who make it fearless and new year after year.

You see, I am someone who is in love with how we express ourselves. I can't get enough of the ways we tell and share stories, collaborate to make a statement, and — sometimes without even knowing it — how we define our culture. And that's

what our Fringe is — a very powerful platform to declare who we are with theatre, spoken word, song and dance, experimental experiences, and hundreds of events in all corners of this town. It's also a proving ground for new work, an inviting place to experience emerging talent, and a place to discover a few things about yourself and those around you.

So hello again Wellington — I love you more than ever. Because what it feels like here is creative, expressive, free, provocative and bold. This city, this Fringe, all of you incredible artists and creative producers — thank you for doing what you do and for helping me find my way home.

Eric Holowacz, CEO
Creative Capital Arts Trust



FESTIVAL INFO

01 Introductions
& Contact

10 Accessible
Fringe

12 Ticketing

13 Fringe
Addicts

EVENT LISTINGS

15 Bits for the
Whole Whānau

21 Wind in
Your Bits

25 A Whole Lot of
International

37 Eye &
Ear Bits

43 Performance
Parts

67 Naughty
Bits

THE BACK BITS

72 BATS
Timetable

74 Venue
Map

76 Awards

BRANDING THE FRINGE

WITH ALL THE BITS

@INJECTDESIGN



P +64 4 381 3800

EST.2002

WWW.INJECT.CO.NZ

ACCESSIBLE FRINGE

PHYSICAL ACCESS



NZ Fringe events are presented at independent venues across Wellington. Accessibility can vary between venues. To confirm wheelchair or ramp access:

Check the listing in this guide. Venues who have informed us they have disability access will have the wheelchair symbol next to the event details. Please check with venues directly about parking.

If the wheelchair symbol is not shown, call the venue directly to enquire whether they can provide you with the access you require.

Turn 'on' the wheelchair symbol at fringe.co.nz. This will limit programme listings to venues that have identified as accessible.

Check with Fringe when booking, our ticketing staff will give you any up to date information we have received.

Fringe can provide you with a map of accessible public toilets and parking in Wellington CBD. Printed copies will be at the Box Office and as a pdf online.

Fringe has made every attempt to ensure information provided is accurate. Please note that some venues may be made accessible with 24 hours' notice; check with Fringe when booking.

SIGNED, AUDIO DESCRIBED OR RELAXED PERFORMANCES

For information on NZSL translated performances or shows with high audio content, audio described and relaxed performances, please contact the Fringe office. We will provide you with any information available to us. Or visit fringe.co.nz for detailed listings.

TOUCH TOURS

For information on events providing touch tours, please contact the Fringe office. We will provide you with any information available to us. Or visit fringe.co.nz for detailed listings.

COMPANIONS AND CARERS

Companions and carers accompanying you to NZ Fringe events are eligible for concession priced tickets.

AUDIENCE INTERACTION

Some events may include audience interaction. The level and frequency will be indicated on the website, so you can check ahead of time and make an informed choice. If you do wish to attend an event with a strong level of audience interaction the Fringe FoH team can advise you on the safest place to sit.

NZ Fringe make every effort to ensure our disability information is correct. Please contact us if there is an error.

Text too small? If you would like large-print versions of event descriptions, please contact the Fringe office and we can email or post them to you: welcome@fringe.co.nz or (04) 212 4725

A GUIDE TO THIS GUIDE



FRINGE FLICKS

NZ FRINGE SPECIAL EVENT FILM

A festival within a festival.

There will be award winners, there will be new practitioners, there will be people testing their craft. Every evening brings a new line up of hand-picked, fresh shorts for your delectation.

VENUE	Te Auaha Cinema
TIME	7pm (120min)
PRICES	KOHA
RATING	No Restrictions
INFO/TIX	fringe.co.nz

DATES	MAR	S	M	T	W	T	F	S	S	M	T	W	T	F	S	S	M
	1	2	3	4	5	6	7	8	9	10	11	12	13	14	15	16	17

- 1 Show Title
- 2 Production Company
- 3 Genre
- 4 Show Information
- 5 Content Warnings
- 6 Promotional Image
- 7 Performance Dates

Ticket Prices
Ch Child
Full Full Price
C/Stu Concession/ Student
FA Fringe Addict
G6+ Group of 6 or more
G10+ Group of 10 or more
KOHA Donation (See page 11 for more information)

RATINGS

PGR Parental guidance is recommended for the littlies
13+ It's got a bit of stuff that's not really for the young ones
18+ This one's just for the big kids, over 18 only
No Restrictons Suitable for all the whānau

CONTENT & ACCESSIBILITY



STROBE LIGHTING



COARSE LANGUAGE



DEPICTIONS OF VIOLENCE



DISABILITY ACCESS



NUDITY

Disclaimer: We, the NZ Fringe team have sacrificed ourselves on the altar of proof-copying to ensure the contents of this programme are correct. Changes may occur however after the date of publication. Please check details online or in person when booking.

TICKETS

You're going to want tickets, then you know you've got a spot — here's the best way to pick them up:

ONLINE

Our website has the most up-to-date information for all Fringe events and you can book tickets and confirm details there: fringe.co.nz

BOX OFFICE

You can buy tickets in person, or pick up a swag of Fringe Merch from our friendly team at the Fringe Box Office 10am to 5.30pm Tuesday to Saturday throughout Fringe.

TICKET TYPES

There's a few different ticket types at Fringe, here's the lowdown...

CONCESSIONS

Concession rates apply to Community Service Card holders, Gold Card holders, students with ID, young adults and children under 16. Fringe also offers concession rates to care companions. Proof of concession eligibility is required at point of sale or when entering venues.

FRINGE ADDICTS

Everyone loves a bargain! And the best way to be in the Fringe know about bargains is to get yourself a Fringe addict card. See the opposite page for more info.

KOHA SHOWS

Here at Fringe, we support financial accessibility to art; around 25% of the programme is Free or Koha.

Koha is a Māori custom which can be translated as gift, present, offering, donation or contribution. Some places refer to it as 'pay what you feel'.

Koha in the Fringe usually means you are experiencing an event that is: development work, expressing new formats, ideas or work, or, work an artist specifically wants to be as accessible as possible. So you as audience decide what you'd like to give.

As many shows have limited capacity Fringe offers a koha seat reservation for \$5. This guarantees you entry and you can give additional koha in person at the event. Or you can just turn up and chance it, also a valid option. Please note that artists pay for our koha booking service so that additional koha at the event can mean a lot and we encourage you to 'pay what you feel' in return for the art.

PAY IT FORWARD TICKETS

Have you ever really wanted to attend an event and not been able to afford it? We at Fringe have a policy "No Lack of Fun for Lack of Funds." When you buy a ticket to a Fringe event, you'll be given the option to add a PIF ticket to your basket; we then put these into a pool to distribute to those who otherwise wouldn't be able to experience Fringe.

NO BOOKING FEES FOR 2020

NZ Fringe doesn't add on booking fees however all credit card and online purchases will incur a processing fee at the time of transaction.

SMALL PRINT

Full terms and conditions of ticket sales can be found on the Fringe website: fringe.co.nz



FRINGE WITH BENEFITS

Fringe is creativity, celebration, connectivity.

Help New Zealand Fringe Festival better facilitate artists and audiences, champion new work, and harness the magnificent beast that is Wellington's creative energy.

Listed here are all the ways that you can become a part of the Fringe Hub. For an in depth look, go to fringe.co.nz/membership or give us a call on 04 212 4725.

What's your pleasure? Choose your nectar. Let's raise a glass together, to Fringe!

FRINGE ADDICT

\$15 for the Fringe Addict Card gives you 30% off all Fringe shows, plus a bunch of special deals.

CORNERSTONE FRINGE MEMBERSHIP

Starting at \$10 a month, this membership gives you everything Fringe Addict, plus special invites and events throughout the year.

FRIEND OF FRINGE MEMBERSHIP

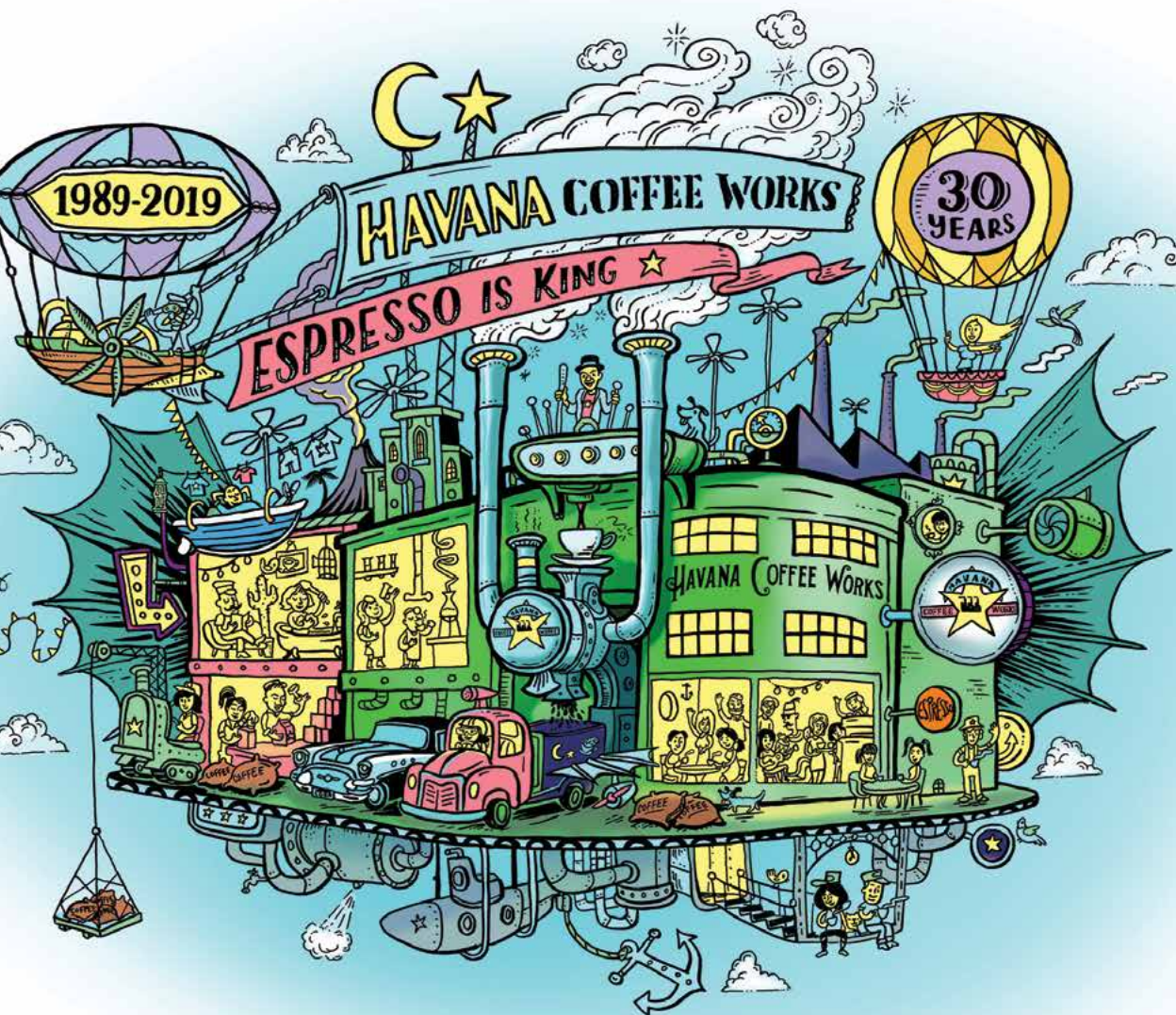
A one off payment, once a year, starting at \$1000. That's what friends are for!

FRINGE LINCHPIN

Become a linchpin of Fringe- support a lasting legacy, and decide where exactly your money goes. Starting at \$10,000

FRINGE LEGACY PATRON

Make supporting Fringe part of your legacy forever. Endowment contributions, starting at \$50,000.



BITS FOR THE WHOLE WHĀNAU



Family Friendly Fringe - ranging in ages, spaces and genres. We welcome you to experience Fringe with your whole whānau.

EVENTS



CHALK THE WALK

NZ FRINGE SPECIAL EVENT
VISUAL ART; FAMILY; WORKSHOP; OUTDOOR

VENUE Wellington Waterfront
TIME 11.00am (180min)
PRICES FREE
RATING No Restrictions
INFO/TIX fringe.co.nz

Our celebrated annual family event is Chalk the Walk - where the whole whānau can participate in the Fringe Festival! We'll be down on the Taranaki St Wharf (the water side of the Wharewaka) chalking up a storm and expressing our creativity on the pavement.

Everyone is welcome. This is a great family event and you can draw ANYTHING! Pirates, unicorns, trees, flowers, family, bees, dogs, bears or Batman, that guy over there. The city provides the space, Fringe provides the chalk, you provide the art.

DATES | MAR

S M T W T F S S M T W T F S S M
1 2 3 4 5 6 7 8 9 10 11 12 13 14 15 16 17 18 19 20 21 22 23



BORED + THE LITTLE CLOWN: DOUBLE FEATURE

BOOTH THE CLOWN + KATELYN REED (NZ) CIRCUS; COMEDY; PHYSICAL THEATRE

This double bill premier showcase from Te Auaha's Circus Course Graduates. BORED explores imagination and creation resulting from utter boredom. THE LITTLE CLOWN (That Fell To Earth) is a story of hilarious misadventure. This double showcase is filled with circus skill and creativity at its best. Suitable for all ages.

VENUE Te Auaha - Tapere Nui
TIME 6.00pm (60min)
PRICES Full \$20.00
C/Stu \$15.00
Ch \$10.00
FA \$14.00
RATING No Restrictions
INFO/TIX fringe.co.nz

DATES | MAR

S M T W T F S S M T W T F S S M
1 2 3 4 5 6 7 8 9 10 11 12 13 14 15 16 17 18 19 20 21 22 23



DIARY OF A SHOWMAN

MR WIZOWSKI ENTERTAINMENT (NZ) THEATRE; CIRCUS; COMEDY

Come behind the curtain in this circus theatre show which explores the performer's fundamental question: who is harder to satisfy, the audience or themselves? Dealing with the serious side of clowning around, it shows the only thing worse than a clown failing is failing to clown.

VENUE Te Auaha - Tapere Nui
TIME 6.00pm (60min)
PRICES Full \$20.00
C/Stu \$15.00
FA \$14.00
PGR
RATING No Restrictions
INFO/TIX fringe.co.nz

DATES | MAR

S M T W T F S S M T W T F S S M
1 2 3 4 5 6 7 8 9 10 11 12 13 14 15 16 17 18 19 20 21 22 23

ELEVATOR!

STEW PRODUCTIONS (NZ) DEVEISED; COMEDY; LUCKY DIP

Going up or down? ELEVATOR! will make you laugh, tug at your heartstrings and draw you in with fun, quirky performances from the fun-makers at STEW. What happens when love blossoms on an elevator? It's about taking that leap of faith into the unknown!

VENUE J & M Fastfood
TIME 1.00pm, 3.00pm (60min)
PRICES Full \$15.00
C/Stu \$10.00
FA \$10.00
RATING No Restrictions
INFO/TIX fringe.co.nz

DATES | MAR

S M T W T F S S M T W T F S S M
1 2 3 4 5 6 7 8 9 10 11 12 13 14 15 16 17 18 19 20 21 22 23

THE GREATEST MAGIC SHOW

SHOWMEN PRODUCTIONS (AU) CIRCUS; COMEDY; FAMILY

Best in Fringe Kids | Sydney Fringe 2019

Direct from Australia, the multi-award winning, sell out sensation of 2019 is headed to NZ for the very first time! Featuring insane circus stunts and mind-bending magical mayhem, this is a show not to be missed! FREE MAGIC WAND on entry!!

VENUE Fat G (Fringe at the Gryphon)
TIME 11.00am, 1.00pm, 3.00pm (60min)
PRICES Full \$27.00
C/Stu \$23.00
FA \$19.00
6+ \$21.00
10+ \$18.00
RATING No Restrictions
INFO/TIX fringe.co.nz

DATES | MAR

S M T W T F S S M T W T F S S M
1 2 3 4 5 6 7 8 9 10 11 12 13 14 15 16 17 18 19 20 21 22 23

JĪYAN BE TE NINA

LEILA LOIS AND PATRICK ROSE (NZ) VISUAL ART; OTHER

Jīyan be te nina// there is no life without you, is an interdisciplinary, immersive installation and performance that exalts the rediscovering/ rebirthing of our ancestry and narrative. Like a phoenix from the flames of current fearful global crises- war trauma, environmental violence and disconnect- story, music, dance and lore arise to remind us of our true origins and callings.

VENUE See website for details
PRICES FREE
RATING No Restrictions
INFO/TIX fringe.co.nz

LENTIL BOLOGNESE

"JUST CHUCK IT IN" PRODUCTIONS (NZ) SPOKEN WORD/STORYTELLING; COMEDY; OUTDOOR

A sisterly comedy duo dives into their childhood memories of growing up on the streets of Elsdon, Porirua in the 1990's. There's a bit of dance, a bit of drama and a side of lentil bolognese.

VENUE Various Locations
TIME 6.00pm, 1.00pm (30min)
PRICES KOHA
RATING No Restrictions
INFO/TIX fringe.co.nz

DATES | MAR

S M T W T F S S M T W T F S S M
1 2 3 4 5 6 7 8 9 10 11 12 13 14 15 16 17 18 19 20 21 22 23



EVENTS



MARAMATAKA

BATS THEATRE (NZ) THEATRE

Marama - to be clear, to understand, clarity.
Taka - to fall.
Maramataka - the turning of the moon.

A series of works by Rangatahi o Te Whanganui-a-Tara.

VENUE BATS Theatre - The Studio
TIME 7.30pm (180min)
PRICES Full \$18.00
C/Stu \$14.00
FA \$12.00
RATING No Restrictions
INFO/TIX bats.co.nz

DATES MAR S M T W T F S S M T W T F S S M T W T F S S M
1 2 3 4 5 6 7 8 9 10 11 12 13 14 15 16 17 18 19 20 21 22 23



MARY BUMBY'S HIVE OF STORY

IMAGINED WORLDS (NZ) MUSIC; THEATRE; SPOKEN WORD/STORYTELLING

A prophecy, hive of story and plenty of cross pollination.
Meet Mary Bumby, Aotearoa's honey bee pioneer, returned to earth to reawaken the beeing in humans. Highly interactive humorous excursion into a world where Apis Mellifera, New Zealand's past/ future, meet to make something sticky and sweet.

VENUE See website for details
PRICES KOHA
RATING PGR
INFO/TIX fringe.co.nz

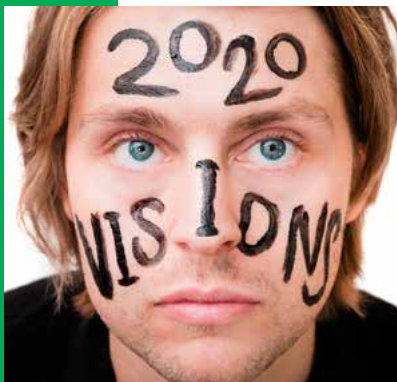
MIND(IS)FUL

DELAYING REALITY (NZ) DANCE; VISUAL ART; CIRCUS

Delaying Reality presents Mind(is)ful: a playful abstract exploration of all the negative junk that finds itself stored in the attic that is your brain. An experimental work featuring contemporary dance and circus talent from all over Wellington. Witness cognitive thought patterns come to life.

VENUE Te Auaha - Tapere Nui
TIME 9.00pm (50min)
PRICES Full \$20.00
C/Stu \$18.00
FA \$14.00
RATING No Restrictions
INFO/TIX fringe.co.nz

DATES FEB T F S MAR S M T W T F S S M T W T F S S M T
27 28 29 1 2 3 4 5 6 7 8 9 10 11 12 13 14 15 16 17



TOM SKELTON
WHAT IF I HADN'T GONE BLIND?

"An extremely clever one-man show." ★★★★★
- Edinburgh Festivals Magazine

28th February - 4th March, 7.30pm, The Studio, BATS

RAYCAT

SUCCIGANG (NZ) PUPPETRY

We are sending a message ten thousand years into the future...
You're in danger.
Turn around.
Don't drink the water.
Your dog is no help here.
This isn't a mountain.
Listen to your cat.

VENUE Wellington School of Drawing
TIME 6.00pm (90min)
PRICES KOHA
RATING No Restrictions
INFO/TIX fringe.co.nz

DATES MAR S M T W T F S S M T W T F S S M T W T F S S M
1 2 3 4 5 6 7 8 9 10 11 12 13 14 15 16 17 18 19 20 21 22 23

THURSDAY

BORDERLINE ARTS ENSEMBLE (NZ) DANCE

For a brief moment, Thursday transforms the iconic Wellington Railway Station from a place of transportation and transit into a nostalgic scene of high romance. Borderline Art Ensemble's stunning dance duet is inspired by the 1945 film classic Brief Encounter, named "the best romantic film of all time" (The Guardian).

VENUE Wellington Railway Station
TIME 3.00pm, 5.00pm (10min)
PRICES FREE
RATING No Restrictions
INFO/TIX fringe.co.nz

DATES MAR S M T W T F S S M T W T F S S M T W T F S S M
1 2 3 4 5 6 7 8 9 10 11 12 13 14 15 16 17 18 19 20 21 22 23



SUNDAY 8 MARCH
14 STAGES | 450 STALLS

NEWTOWNFESTIVAL.ORG.NZ

Absolutely Positively Wellington City Council
Me Hoko Ki Pōneke

20

words of
wisdom

wayne youle

15 December 2019
– 29 March 2020

PĀTAKA

www.pataka.org.nz
17 Parumoana Street, Porirua

porirua city

MAUDE & MILLER
HAIRDRESSERS & COLLECTORS
Proudly supporting Pātaka

*I'll be the one wearing the pink carnation,
standing in the corner (sweating) 2017, mixed
media, collection of the artist. Photograph by
John Collie courtesy of Te Puna o Waiwhetū
Christchurch Art Gallery*



WIND IN YOUR BITS



Brace yourself to embrace the unpredictable
Wellington weather and get outside for
some al fresco art. But maybe keep your
raincoat handy... just in case.

EVENTS



CUBADUPA

CUBADUPA DANCE; MUSIC; FAMILY; LIVE ART; OUTDOOR

VENUE Cuba Street
TIME All Day
PRICES FREE
RATING No Restrictions
INFO/TIX cubadupa.co.nz

CubaDupa is the annual immersive celebration of extraordinary arts and culture in the iconic heart of downtown Wellington, attracting thousands of people from all walks of life to transform the streets. Showcasing over 250 curated performances across two days, combining artists from local, national and global stages, our focus is set on enriching our community with artistic excellence through inclusion, participation and artistic exploration.

DATES | MAR

S S M T W T F S S M T W T F S S M T W T F S S
7 8 9 10 11 12 13 14 15 16 17 18 19 20 21 22 23 24 25 26 27 28 29



NEWTOWN FESTIVAL

NEWTOWN FESTIVAL TRUST MUSIC; FAMILY; OUTDOOR; LIVE ART

VENUE Streets of Newtown
TIME All Day
PRICES FREE
RATING No Restrictions
INFO/TIX newtownfestival.org.nz

Come to New Zealand's biggest free music festival and street fair, in the heart of Newtown - Wellington's most diverse and colourful suburb. Discover exciting music from established and emerging artists on our 14 stages: listen to cutting edge indie rock, alternative electronic music, singer-songwriters, drum & bass, and much more!

Dance, parades, buskers, circus, and stalls selling all sorts of treasure, including the best range of international food to be found anywhere, complete a great day out!

DATES | MAR

S M T W T F S S M T W T F S S M T W T F S S M
1 2 3 4 5 6 7 8 9 10 11 12 13 14 15 16 17 18 19 20 21 22 23

WELLINGTON INTERNATIONAL PRIDE PARADE

WELLINGTON INTERNATIONAL PRIDE PARADE
DANCE; LGBTQIA+; OUTDOOR

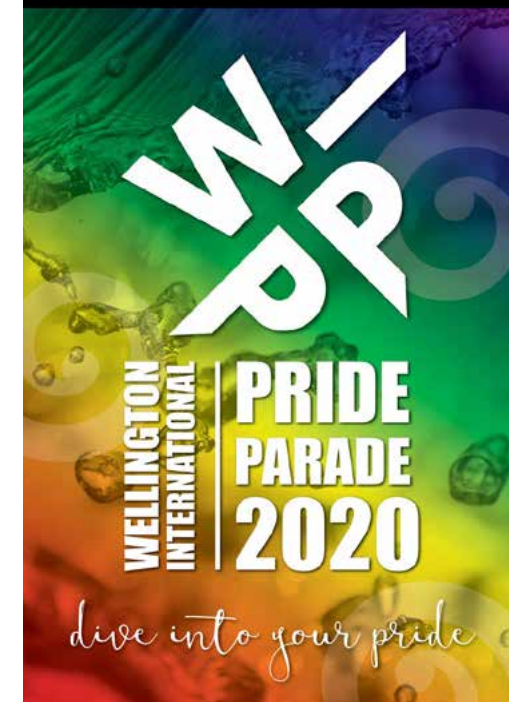
VENUE Courtenay Place
TIME 6.00pm (90min)
PRICES FREE
RATING No Restrictions
INFO/TIX fringe.co.nz

Wellington International Pride Parade will be back, bigger, brighter and better in 2020! The world's coolest little capital will once again come alive with a huge celebration of Pride, Love, Inclusivity and Diversity. Join the 1000's of spectators to witness this dazzling display of diversity.

DATES | MAR

S M T W T F S S M T W T F S S M T W T F S S M
1 2 3 4 5 6 7 8 9 10 11 12 13 14 15 16 17 18 19 20 21 22 23

Saturday 7 March



CATHERINE BADWIND

CATHERINE BADWIND (UK) COMEDY; IMPROVISATION; OUTDOOR

Catherine Badwind is back to whirl the streets of Wellington with her weird and wonderful characters. When cycling up Italian mountains and around Croatia's scorching coastline an array of new personas appeared that will debut at NZ Fringe. Keep an eye out!

VENUE Various Locations
TIME 3.00pm (60min)
PRICES FREE
RATING No Restrictions
INFO/TIX fringe.co.nz

DATES | FEB F S S M T W T F S S M T W T F S S M T W T F S
7 8 9 10 11 12 13 14 15 16 17 18 19 20 21 22 23 24 25 26 27 28 29
MAR S M T W T F S S M T W T F S S M T W T F S S M
1 2 3 4 5 6 7 8 9 10 11 12 13 14 15 16 17 18 19 20 21 22 23



YUCK CIRCUS 2019

SITUATIONS IN PLAY

A TRIPLE BILL

ALESSIA AUGELLO

BJORN ASLUND

ALEC KATSOURAKIS

12 - 14 MARCH
TE WHAEA

**toi
pōneke**
arts centre

A WHOLE LOT OF INTERNATIONAL



Fringe friends from far and wide coming to Wellington this festival. Bringing their best, and often award winning art to your town and making you fall in love with their talent.

EVENTS



FEMINAH

CHARLOTTE OTTON (AU) **THEATRE; COMEDY**

VENUE Fat G (Fringe at the Gryphon)
TIME 7.30pm (60min)
PRICES Full \$27.00
 C/Stu \$22.00
 FA \$18.00
 6+ \$20.00
 10+ \$18.00
RATING 18+
INFO/TIX fringe.co.nz



Feminah is one woman's pursuit of vulgarity and zero fucks; a cabaret of female driven pop-songs spanning fifty years paired with the ultimate rebellion against femininity. A power ballad for women who censor themselves: this is what happens when a woman refuses to 'have it all' and instead, annihilates it.

DATES | MAR

S M T W T F S S M T W T F S S M T W T F S S M
 1 2 3 4 5 6 7 8 9 10 11 12 13 14 15 16 17 18 19 20 21 22 23



THE MARVELLOUS SNAKE BOY

ALEXANDER RICHMOND (AU) **DEvised; COMEDY; IMPROVISATION**

VENUE The Fringe Bar
TIME 7.00pm (60min)
PRICES Full \$20.00
 C/Stu \$15.00
 FA \$14.00
RATING No Restrictions
INFO/TIX fringe.co.nz



SnakeBoy was raised for 18 years by a family of red-bellies in the Australian Outback. Snake Boy knows what it is to be 'snake'. Now SnakeBoy wants to learn. To learn what it is to be 'boy'. Teach him language, love and compassion. Teach him arms and legs.

DATES | MAR

S M T W T F S S M T W T F S S M T W T F S S M
 1 2 3 4 5 6 7 8 9 10 11 12 13 14 15 16 17 18 19 20 21 22 23

YOUR BEST AMERICAN GIRL

MAARTE THEATRE COLLECTIVE (US) **THEATRE; CABARET**

VENUE Te Auaha - Tapere Iti
TIME 8.00pm (45min)
PRICES Full \$20.00
 FA \$14.00
RATING 18+
INFO/TIX fringe.co.nz



Fresh from its world premiere, this one-woman music and dance spectacle explores what makes a young, mixed race woman from the United States the ideal American girl. Winner: "Outstanding World Premiere", "Critic's Pick", and "Best of Fest" by San Diego International Fringe Festival.

DATES | MAR

S M T W T F S S M T W T F S S M T W T F S S M
 1 2 3 4 5 6 7 8 9 10 11 12 13 14 15 16 17 18 19 20 21 22 23



ANDREW SILVERWOOD: CALL ME JANICE

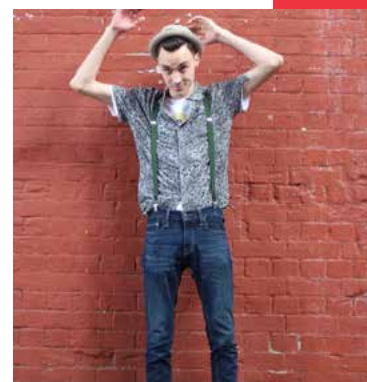
PREACHERS PODCAST ONLINE & ONSTAGE (AUS) AND FRAGILITY LONDON (UK) **COMEDY**

Andrew Silverwood got dumped, accidentally took a date to a concentration camp, had a girl ask him to call her by his mum's name & accidentally took dog ketamine. Truthful, stupid storytelling. ★★★★★ "No boundaries" Weekend Notes ★★★★★ Adelaidian Gothenburg Fringe BFF Award Winner 2017

VENUE The Fringe Bar
TIME 8.30pm (60min)
PRICES Full \$25.00
 C/Stu \$20.00
 FA \$18.00
RATING 18+
INFO/TIX fringe.co.nz

DATES | MAR

S M T W T F S S M T W T F S S M T W T F S S M
 1 2 3 4 5 6 7 8 9 10 11 12 13 14 15 16 17 18 19 20 21 22 23



AUTOMATONATRON

AMY CUNNINGHAM (CA) **SPOKEN WORD/STORYTELLING; COMEDY**

As a child, Amy was identified by doctors as 'high risk.' She has been rigorously studied by medical professionals since the mid-nineties, because they were interested to see how she'd turn out. Decades into their research, the answer is... unclear — ask again later.

VENUE Ivy Bar and Cabaret
TIME 7.30pm (60min)
PRICES Full \$14.00, \$18.00
 C/Stu \$14.00
 FA \$12.50
RATING 18+
INFO/TIX fringe.co.nz

DATES | MAR

S M T W T F S S M T W T F S S M T W T F S S M
 1 2 3 4 5 6 7 8 9 10 11 12 13 14 15 16 17 18 19 20 21 22 23





★★★★★
"An hour of pure
entertainment
and hilarity"
(Bunbury Magazine)
Exceptionally Funny"
Mark Dolan
(C4 Balls of Steel)

BALD MAN SINGS RIHANNA

BALD MAN (UK) **COMEDY**

Heard a bald man sing Rihanna? Fresh from sold out runs in Edinburgh & as seen at the biggest comedy across the world, including Caroline's on Broadway - Scotsman Gary Sansome takes an irreverent look at music and popular culture. 'An hour of pure entertainment and hilarity' ★★★★★ (Bunbury Magazine).

VENUE Cavern Club
TIME 8.30pm, 7.00pm (60min)
PRICES Full \$15.00
C/Stu \$10.00
FA \$10.00
RATING 18+
INFO/TIX fringe.co.nz

DATES | MAR | S M T W T F S S M T W T F S S M
1 2 3 4 5 6 7 8 9 10 11 12 13 14 15 16 17 18 19 20 21 22 23



BEN MCCARTHY: ORGANISED CHAOS

BEN MCCARTHY COMEDY (AU) **COMEDY**

After a Debut special, sold out shows in over 20 countries and some of the biggest festivals around the world Ben McCarthy is back in Wellington with his new hour of stand up comedy. Come see the new show and the organized chaos that has become the show

VENUE D4 on Allen
TIME 7.30pm (60min)
PRICES Full \$15.00
C/Stu \$10.00
FA \$10.00
RATING 13+
INFO/TIX fringe.co.nz

DATES | MAR | S M T W T F S S M T W T F S S M
1 2 3 4 5 6 7 8 9 10 11 12 13 14 15 16 17 18 19 20 21 22 23



BUTCHER HOLLER HERE WE COME

AD HOC ECONOMY (US) **DEVISED; THEATRE; PHYSICAL THEATRE**

Proclaimed as "a jarring and fine" by the New York Times, 'Butcher Holler Here We Come' is a critically-acclaimed and multiple award-winning production of five coal miners stuck in a cave collapse. This psychological thriller provokes a socially-relevant conversation about gender, nature, economy, spirituality, and the phenomenology of storytelling.

VENUE BATS Theatre
- The Heyday
Dome
TIME 9.00pm (65min)
PRICES Full \$22.00
C/Stu \$17.00
FA \$15.00
RATING PGR
INFO/TIX bats.co.nz

DATES | MAR | S M T W T F S S M T W T F S S M
1 2 3 4 5 6 7 8 9 10 11 12 13 14 15 16 17 18 19 20 21 22 23



CHARMIAN HUGHES: SHE

CHARMIAN HUGHES (UK) **SPOKEN WORD/STORYTELLING; COMEDY**

London She-Comic Charmian wants to be a good girl. But what kind of girl is mysterious "SHE?" Goddess? Madonna? Or Colossal Squid? Charmian trawls comedy oceans to find truth. 'Lights up stage, wonderful' (Scotsman) 'Great entertainer' (Dominion Post) 'Best gags' (Independent). 'Like Josie Long's mum' Chortle 'Mad Aunt on acid' Theatreview

VENUE The Fringe Bar
TIME 7.30pm (60min)
PRICES Full \$20.00
C/Stu \$15.00
FA \$14.00
RATING 18+
INFO/TIX fringe.co.nz

DATES | MAR | S M T W T F S S M T W T F S S M
1 2 3 4 5 6 7 8 9 10 11 12 13 14 15 16 17 18 19 20 21 22 23

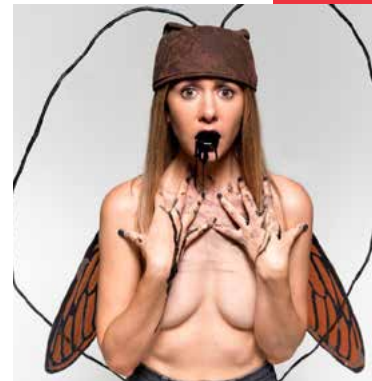
COCKROACH

MELITA ROWSTON (AU) **THEATRE; CABARET; PHYSICAL THEATRE**

An amoral revenge tale for the #MeToo generation, Cockroach is a black-comic prose-poem/grunge cabaret about female anger. Disrupting Kafka and Ovid's Metamorphoses, it's an anthem for our times: furious, funny and hopeful. "Five stars. Hands-down the best show this Fringe. Hilarious. Whip-smart. Bloody important." Great Scott Media, Adelaide Fringe.

VENUE BATS Theatre
- The Heyday
Dome
TIME 6.00pm, 7.00pm (60min)
PRICES Full \$22.00
C/Stu \$17.00
FA \$15.00
RATING 16+
INFO/TIX bats.co.nz

DATES | MAR | S M T W T F S S M T W T F S S M
1 2 3 4 5 6 7 8 9 10 11 12 13 14 15 16 17 18 19 20 21 22 23



THE END OF POLITICS

BOB BELL (US) **COMEDY**

Previously performed in Wellington, my updated show The End of Politics intertwines the current political situation in the US with my personal experiences. I try to emphasize the de-evolution of our political dialogue, how things got to this point, its effect on our everyday lives, all keeping it brutally funny.

VENUE Circus Bar
TIME 8.00pm (60min)
PRICES Full \$17.00
C/Stu \$14.00
FA \$11.50
RATING 13+
INFO/TIX fringe.co.nz

DATES | MAR | S M T W T F S S M T W T F S S M
1 2 3 4 5 6 7 8 9 10 11 12 13 14 15 16 17 18 19 20 21 22 23



ESOTERIC

SNEAKYVILLE THEATRE COMPANY (AU) **DEVISED; THEATRE**

"What if the world was run by angelic light? Love, unconditional love. Non-judgement. Love your fellow man to the truest sense of the word."

That's what Jayden is fighting for.

There's just one obstacle: The Deep State Superpowers. They run the world.

VENUE Circus Bar
TIME 7.30pm (60min)
PRICES Full \$25.00
C/Stu \$15.00
FA \$17.50
6+ \$20.00
18+
RATING PGR
INFO/TIX fringe.co.nz

DATES | MAR | S M T W T F S S M T W T F S S M
1 2 3 4 5 6 7 8 9 10 11 12 13 14 15 16 17 18 19 20 21 22 23



United Kingdom

Kate Tempest

24 February

Michael Fowler
Centre

Partnered by:
THE DOMINION POST

New Zealand
Festival OF THE ARTS

21 Feb - 15 Mar 2020

"This isn't a gig, it's a reckoning"
- THE GUARDIAN
★★★★★



BOOK FAST
festival.nz

EVENTS



HAPPY-GO-WRONG

ANDI SNELLING (AU) **THEATRE; PHYSICAL THEATRE**

Powerhouse performer Andi Snelling fights for her life in this award-winning odyssey with unflinching honesty, grotesque comedy and roller skates.

★★★★★ "Captivating, provocative, heart-wrenching" - Theatrepeople
 ★★★★★ "The audience is putty in her hands" - Beat
 "Sublimely talented" - The Age
 "Astonishing" - WeekendNotes

VENUE Te Auaha - Tapere Iti
TIME 8.00pm (60min)
PRICES Full \$20.00
 C/Stu \$15.00
 FA \$14.00
 6+ \$13.00
RATING 16+
INFO/TIX fringe.co.nz

DATES | MAR | S M T W T F S S M T W T F S S M
 1 2 3 4 5 6 7 8 9 10 11 12 13 14 15 16 17 18 19 20 21 22 23



HOW TO WIN A PUB QUIZ

ALEX LOVE (UK) **COMEDY; IMPROVISATION**

Part stand-up, part actual pub quiz. Get into teams to compete for prizes. English comedian Alex Love brings his highly interactive hour show back to NZ Fringe after sold-out shows in 2019. New quiz and set for 2020, but will probably still feature lots of squid.
 "It is hilarious." ArtMurmurs.nz.

VENUE Cavern Club
TIME 7.00pm (60min)
PRICES Full \$20.00
 C/Stu \$15.00
 FA \$14.00
RATING 18+
INFO/TIX fringe.co.nz

DATES | MAR | S M T W T F S S M T W T F S S M
 1 2 3 4 5 6 7 8 9 10 11 12 13 14 15 16 17 18 19 20 21 22 23



I GOT BIT BY A MONKEY ONCE

MATT HARVEY STUFF (AU) **SPOKEN WORD/STORYTELLING; COMEDY**

How would you get out of getting mugged? Ever been propositioned for a road trip in a bus station bathroom? What's the wildest animal you have been bitten by? Ever been arrested?
 "An amazing hour" of storytelling that will make you feel better about the choices you have made.

VENUE Cavern Club
TIME 8.30pm (60min)
PRICES KOHA
RATING 16+
INFO/TIX fringe.co.nz

DATES | MAR | S M T W T F S S M T W T F S S M
 1 2 3 4 5 6 7 8 9 10 11 12 13 14 15 16 17 18 19 20 21 22 23

(I)SLAND T(RAP): THE EPIC REMIXOLOGY OF THE ODYSSEY

LYRICAL THERAPY UNIVERSITY & A MULLED WHINE (US)
MUSIC; THEATRE; SPOKEN WORD/STORYTELLING

A tour-de-force, virtuoso solo-soul journey by captivating performer Austin Dean Ashford. A mash-up on identity, race, and community. (I)sland (T)rap has won awards world-wide and is BACK in NZ for another epic adventure. Most Outstanding Performer WINNER - NZ Fringe & Dunedin Fringe, 2019

VENUE The Third Eye
TIME 8.00pm (60min)
PRICES Full \$20.00
 C/Stu \$15.00
 FA \$14.00
RATING 13+
INFO/TIX fringe.co.nz

DATES | MAR | S M T W T F S S M T W T F S S M
 1 2 3 4 5 6 7 8 9 10 11 12 13 14 15 16 17 18 19 20 21 22 23



JOFUS AND THE PLANK

FISH AND TWINER'S BAIT SHOP (AU) **COMEDY; PHYSICAL THEATRE; MIME**

Meet Jofus: fast quipping, story spinning, absurd miming extraordinaire. Part Marcel Marceau, part Looney Tunes, and armed with nothing but a plank of wood. This is turbo-charged clowning at its stupidest and most precise.

VENUE BATS Theatre - The Studio
TIME 9.30pm (60min)
PRICES Full \$22.00
 C/Stu \$17.00
 FA \$15.00
RATING No Restrictions
INFO/TIX bats.co.nz

'Flawlessly executed physical comedy'
 Stage Whispers

DATES | MAR | S M T W T F S S M T W T F S S M
 1 2 3 4 5 6 7 8 9 10 11 12 13 14 15 16 17 18 19 20 21 22 23



JUST FOR FUNNY

MATT HARVEY (AU) **COMEDY; OTHER**

Comedians perform comedy and answer quiz questions about the stupidest recent news items. The Just For Funny showcase, the finest live comedy-showcase-podcast you'll watch this Festival. Take a chance on us and maybe win some free tickets to other shows.

VENUE Cavern Club
TIME 7.00pm (60min)
PRICES KOHA
RATING 18+
INFO/TIX fringe.co.nz

DATES | FEB | T F S | MAR | S M T W T F S S M T W T F S S M
 27 28 29 1 2 3 4 5 6 7 8 9 10 11 12 13 14 15 16 17



EVENTS

EVENTS



LAMENTATION - LESSONS OF DARKNESS

GLENN MCKENZIE (AU) **MUSIC; LITERATURE**

Countertenor Glenn McKenzie presents a contemporary-classical cantata which explores the emotional landscape of displacement and homelessness. Lamentation features 'Leçons de Tenebres' (1714) by Francois Couperin, framed by the haunting voices of Shakespeare, Bonhoeffer, and Annie Lennox. Half of proceeds go to refugee organisations.

VENUE St Andrew's on The Terrace
TIME 6.00pm (75min)
PRICES Full \$28.50
C/Stu \$14.50
FA \$21.00
No Restrictions
RATING fringe.co.nz
INFO/TIX

DATES | MAR | S M T W T F S S M T W T F S S M
1 2 3 4 5 6 7 8 9 10 11 12 13 14 15 16 17 18 19 20 21 22 23



NOT JUST A PRETTY FACE: A RETROSPECTIVE

JANICE PERRY (US) **SPOKEN WORD/STORYTELLING; CABARET; LGBTQIA+**

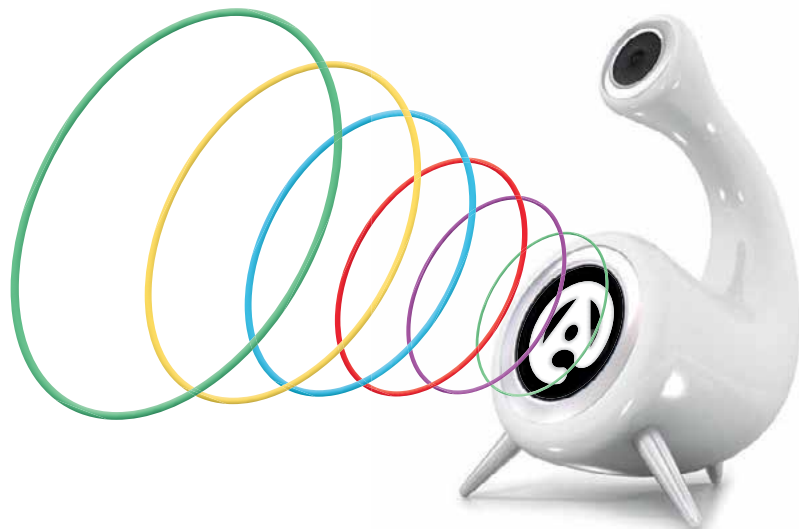
Janice Perry laughs us through her 40 year career as an international performance artist and political satirist, free-ranging from Pope to Pop, from Marilyn Monroe through a few Gulf Wars, High Fashion, Erotica, Andrew Lloyd Webber, Robert Mapplethorpe's naked men and Arts censorship. "One of the world's most respected performance artists" -BBC Radio

VENUE Te Auaha - Cinema
TIME 7.00pm (55min)
PRICES Full \$15.00
C/Stu \$10.00
FA \$11.00
16+
RATING fringe.co.nz
INFO/TIX

DATES | MAR | S M T W T F S S M T W T F S S M
1 2 3 4 5 6 7 8 9 10 11 12 13 14 15 16 17 18 19 20 21 22 23

RADIOACTIVE.FM 88.6

PROUD SUPPORTERS OF THE FRINGE SINCE 1990



STUDIO: +64 4 801 9089 | OFFICE: +64 4 801 9899 | E: STUDIO@RADIOACTIVE.FM | FB & WWW: RADIOACTIVE.FM

ODDACITY

DOWNUNDERGROUND (AU/JAP/UK) **CIRCUS; CABARET; COMEDY**

International award-winning comic luminaries Fraser Hooper, Trent Baumann and Sachie Milkawa, as seen in over fifty countries, star in a best-of special. Classic acts, irreverent routines and eccentric music in one brilliantly odd night out! ★★★★★-Times Colonist
"Our festival favourite"-The Times

VENUE BATS Theatre - The Heyday Dome
TIME 9.00pm, 8.00pm (60min)
PRICES Full \$22.00
C/Stu \$17.00
FA \$15.00
PGR
RATING fringe.co.nz
INFO/TIX

DATES | MAR | S M T W T F S S M T W T F S S M
1 2 3 4 5 6 7 8 9 10 11 12 13 14 15 16 17 18 19 20 21 22 23

(PLEASE) VALIDATE ME BY BENJAMIN MAIO MACKAY

PREACHRS PODCAST ONLINE & ONSTAGE (AU) **SPOKEN WORD/STORYTELLING; COMEDY**

A comedy show seeking your approval. Multi-award nominated, 5 Star performer Benjamin Maio Mackay has been through some sh*t. Now he's got some stories to tell, hopefully they'll make you laugh (or maybe even cry). Either way please come make him feel better about his otherwise meaningless existence.

VENUE The Fringe Bar
TIME 8.30pm (60min)
PRICES Full \$25.00
C/Stu \$20.00
FA \$18.00
18+
RATING fringe.co.nz
INFO/TIX

DATES | MAR | S M T W T F S S M T W T F S S M
1 2 3 4 5 6 7 8 9 10 11 12 13 14 15 16 17 18 19 20 21 22 23

STEPHANIE LAING: BUTTERFINGERS

A RUSH OF LAUGHTER (UK) **SPOKEN WORD/STORYTELLING; COMEDY**

A show about falling down and getting back up, and then falling down again, and trying to get up, but noticing a bit of biscuit you must have dropped earlier, having a little snack while you're down there, and then getting up again and stubbing your toe on a table.

VENUE Cavern Club
TIME 7.00pm (60min)
PRICES Full \$10.00, \$15.00
C/Stu \$10.00
FA \$10.00
18+
RATING fringe.co.nz
INFO/TIX

DATES | MAR | S M T W T F S S M T W T F S S M
1 2 3 4 5 6 7 8 9 10 11 12 13 14 15 16 17 18 19 20 21 22 23

SUGARMAN

FREEDOM2FLY NZ (NZ) **THEATRE; CIRCUS; PHYSICAL THEATRE**

Sugarman is a solo aerial show suitable for young and old alike. Using clowning, physical theatre and aerial acrobatics - trapeze, straps, handstands - the story of a Colombian commuting city worker in the daily grind unfolds.

VENUE Te Auaha - Tapere Nui
TIME 9.00pm (45min)
PRICES Full \$20.00
C/Stu \$15.00
FA \$14.00
No Restrictions
RATING fringe.co.nz
INFO/TIX

DATES | MAR | S M T W T F S S M T W T F S S M
1 2 3 4 5 6 7 8 9 10 11 12 13 14 15 16 17 18 19 20 21 22 23



EVENTS

EVENTS



TOM SKELTON: 2020 VISIONS (IF I HADN'T GONE BLIND)

TOM SKELTON (UK) **SPOKEN WORD/STORYTELLING; COMEDY**

Ten years on from losing his sight, Tom looks back on a decade of being blind and wonders what might have been. But would 2020 Tom swap places with fantasy Tom with 20:20 vision? "Deliciously talented" (Guardian). "An extremely clever one-man show" ★★★★★ (EdFestMag). "F**king funny" ★★★★★ (Funny Tonne).

VENUE BATS Theatre - The Studio
TIME 7.30pm, 6.30pm (50min)
PRICES Full \$22.00
 C/Stu \$17.00
 FA \$15.00
RATING 13+
INFO/TIX bats.co.nz

DATES FEB T F S MAR S M T W T F S S M T W T F S S M T
 27 28 29 1 2 3 4 5 6 7 8 9 10 11 12 13 14 15 16 17



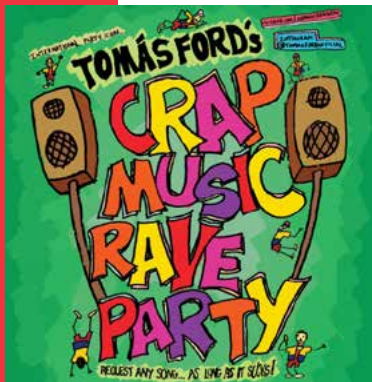
TOMÁS FORD IN KUALA LUMPUR

TOMÁS FORD (AU) **MUSIC; CABARET; COMEDY**

Last year, punk cabaret showman Tomás Ford headed for Malaysia with his wife and son, planning to write a pretentious, Indiana Jones-inspired musical. Instead, his best-ever songs erupted onto his ukulele, full of culture shock, degenerative illness and family bullsh*t. Join him for his funniest, most personal show to date.

VENUE Te Auaha - Tapere Nui
TIME 9.00pm (60min)
PRICES Full \$23.00
 C/Stu \$20.00
 FA \$16.00
 6+ \$19.00
RATING 16+
INFO/TIX fringe.co.nz

DATES MAR S M T W T F S S M T W T F S S M T W T F S S M
 1 2 3 4 5 6 7 8 9 10 11 12 13 14 15 16 17 18 19 20 21 22 23



TOMÁS FORD'S CRAP MUSIC RAVE PARTY

TOMÁS FORD (AU) **MUSIC; COMEDY; IMPROVISATION**

International party icon Tomás Ford will play any request you want (as long as it sucks) while he creates hyperactive chaos on the dancefloor. We're talking hideously hi-vis costumes, tragically low-rent drag shows, brilliantly dumb ideas and limbs-a-flailing dancing. Sold out around NZ, Australia and the UK!

VENUE Te Auaha - Bar
TIME 10.00pm (210min)
PRICES Full \$25.00
 C/Stu \$22.00
 FA \$17.50
 6+ \$22.00
 10+ \$19.50
RATING 18+
INFO/TIX fringe.co.nz

DATES MAR S M T W T F S S M T W T F S S M T W T F S S M
 1 2 3 4 5 6 7 8 9 10 11 12 13 14 15 16 17 18 19 20 21 22 23



TRANSHUMANCE

BUTCH MERMAID PRODUCTIONS (US) **CIRCUS; PHYSICAL THEATRE; LGBTQIA+**

The gender binary: isn't it bizarre? Come dive into the absurd as we follow one clown's magical journey across the landscape of gender in search of a place to call home. Join NYC-based artist Ania Upstill in this playful, heartfelt exploration as they dare to imagine a world in-between.

VENUE BATS Theatre - The Random Stage
TIME 7.30pm, 8.30pm (50min)
PRICES Full \$22.00
 C/Stu \$17.00
 FA \$15.00
RATING No Restrictions
INFO/TIX bats.co.nz

DATES MAR S M T W T F S S M T W T F S S M T W T F S S M
 1 2 3 4 5 6 7 8 9 10 11 12 13 14 15 16 17 18 19 20 21 22 23

VIVIR: FLAMENCO GUITAR & DANCE

AYLIN ELEONORA BAYAZ (ES) **DANCE; MUSIC**

Ancient secrets explored with a contemporary feel in an elegant night of Flamenco. A new interpretation of the art of Flamenco, VIVIR is a refined and intense showcase of traditional Flamenco blended with modern flavours. ★★★★★ Mumble Cirque, Edinburgh 2019 "The standout performance" TheWeereview, Edinburgh 2018

VENUE Circa Theatre
TIME 6.30pm, 8.00pm (60min)
PRICES Full \$30.00
 C/Stu \$25.00
 FA \$21.00
RATING No Restrictions
INFO/TIX circa.co.nz

DATES FEB W T F S MAR S M T W T F S S M T W T F S S M
 26 27 28 29 1 2 3 4 5 6 7 8 9 10 11 12 13 14 15 16



YOU'RE A GOOD MAN, DOCTOR PIRATE

GILLIAN ENGLISH (CA) **THEATRE; SPOKEN WORD/STORYTELLING; COMEDY**

For Gillian's 30th birthday, she had a session with a famous astrologer. A prediction was made, a prophecy revealed, & events set in motion that would change her life forever. Do we control our fate, or is it written in the stars? ★★★★★ - The Age ★★★★★ - Broadway Baby

VENUE Te Auaha - Tapere Nui
TIME 7.30pm (60min)
PRICES Full \$30.00
 C/Stu \$25.00
 FA \$21.00
RATING 16+
INFO/TIX fringe.co.nz

DATES MAR S M T W T F S S M T W T F S S M T W T F S S M
 1 2 3 4 5 6 7 8 9 10 11 12 13 14 15 16 17 18 19 20 21 22 23



BEYOND THE PALE

Returning again for the New Zealand Fringe Festival 2020



ENROL NOW
FOR 2020

"I LOVED IT"
there and I learnt so much"



studycreativity.ac.nz

Caleb, Whitireia Grad

Lead Guitar/Lead Vocals
Sons of Zion



Study at
TE AUAKA
NZ Institute
of Creativity



**Skills to set YOU
up for life!**

EYE & EAR BITS



Fringe to make your ears rejoice and your eyes delight. Music, podcasts, radio, visual art, digital, film, and poetic experiences.

EVENTS



MARCH 1ST -3RD
CIRCUS BAR WELLINGTON



Proud to be Fringe's Digital Partner

We use a combination of
creativity & intelligence to craft
immersive digital experiences.

Our process is pragmatic.

Our people listen, dream, code
and deliver beyond expectation.

NV. Crafted digital experiences.



nvinteractive.com

nv

Crafted
Digital
Experiences

PERFORMANCE PARTS



Live Fringe performance of all kinds including theatre,
comedy, dance, and all the genres and sub-genres
you could ever imagine, from across Wellington and
New Zealand. Throw yourself in and see what you
come out with...

EVENTS



FRINGE OPENING SHENANIGANS



NZ FRINGE (NZ) **OTHER; LIVE ART**

VENUE Te Auaha - Tapere Nui
TIME 7.00pm (120min)
PRICES Full \$15.00
RATING 13+
INFO/TIX fringe.co.nz

Fringe is 30! Fringe is Flirty!

Come along and join us for the celebration of the 30th annual New Zealand Fringe Festival. That's right, three decades of Fringe in Wellington, so naturally we'll be throwing one kick-ass party to launch the goods that is NZ Fringe Festival 2020.

There will be a secret showcase, a walk through Fringe's past, and some delicious drinks from our pals at Garage Project.

DATES FEB T F S MAR S M T W T F S S M T W T
27 28 29 1 2 3 4 5 6 7 8 9 10 11 12



2020 WELLINGTON RAW COMEDY QUEST - HEAT 1

HUMOROUS ARTS (NZ) **COMEDY**

The capital's premier comedy competition. Witness the rising stars in stand-up comedy before they hit the big time. A guaranteed great night of big laughs.

To enter, email contact@humorous.co.nz. All you need is 6min of original material, and the guts to give it a go!

VENUE San Fran
TIME 8.00pm (120min)
PRICES Full \$18.00
C/Stu \$15.00
FA \$12.00
RATING 18+
INFO/TIX fringe.co.nz

DATES FEB T F S MAR S M T W T F S S M T W T F S S M T
27 28 29 1 2 3 4 5 6 7 8 9 10 11 12 13 14 15 16 17



AGE ON STAGE: DANCE ME TO THE END OF TIME

VOICE ARTS (NZ) **DEvised**

This is a very special devised performance honouring the stories, the wisdom and the lived experience of our elders. The average age of the performer is around 80, for many this is their first time on stage. They have create a performance that reflects their histories and their future.

VENUE Malvina Major Retirement Village
TIME 11.00am, 7.00pm, 2.00pm (45min)
PRICES FREE
RATING No Restrictions
INFO/TIX fringe.co.nz

DATES MAR S M T W T F S S M T W T F S S M T
1 2 3 4 5 6 7 8 9 10 11 12 13 14 15 16 17 18 19 20 21 22 23

LIFT-OFF



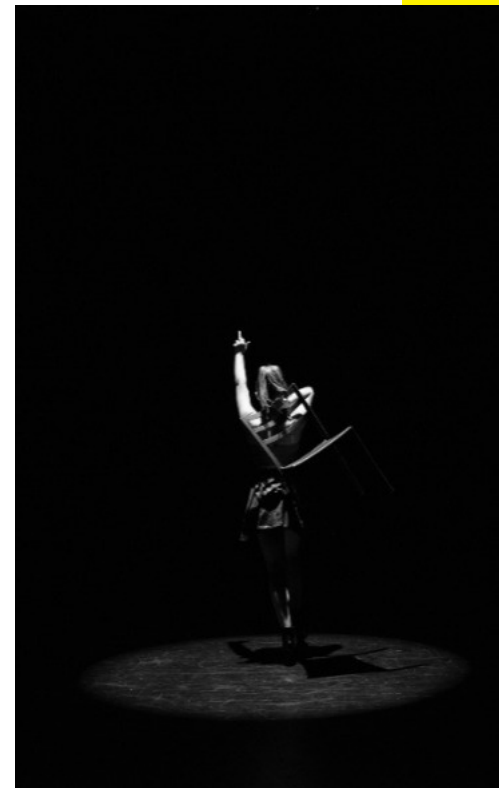
TE AUAHA (MP) **DANCE; MUSIC; PHYSICAL THEATRE**

VENUE Te Auaha - Tapere Nui
TIME 7.30pm (60min)
PRICES Full \$18.00
C/Stu \$15.00
FA \$12.00
RATING No Restrictions
INFO/TIX fringe.co.nz

Get your fix of fresh new talent! Lift-Off is your one-stop sample of brand-new work from artists emerging onto the Capital's performing arts scene. See tomorrow's taste-makers live and firing on all cylinders at Lift-Off!

DATES MAR

S M T W T F S S M T W T F S S M T W T F S S M
1 2 3 4 5 6 7 8 9 10 11 12 13 14 15 16 17 18 19 20 21 22 23



AMANDA PALMER: THERE WILL BE NO INTERMISSION



RACHEL ROUGE & NZ FRINGE FESTIVAL (US) **MUSIC**

The unapologetic front-woman of The Dresden Dolls brings her critically acclaimed one-woman show to Aotearoa. Palmer's third solo LP, There Will Be No Intermission, is the multi-faceted artist's most powerful and personal collection to date, with songs that tackle the big questions: life, death, grief and how we make sense with it all.

VENUE St Peter's on Willis
TIME 7.00pm (240min)
PRICES Full \$55.00
C/Stu \$50.00
FA \$45.00
RATING 16+
INFO/TIX fringe.co.nz

DATES MAR S M T W T F S S M T W T F S S M T W T F S S M
1 2 3 4 5 6 7 8 9 10 11 12 13 14 15 16 17 18 19 20 21 22 23



ANNA NICHOLSON: GET HAPPY



ANNA NICHOLSON (UK) **COMEDY**

Following her Best Comedy award-winning show 'Woman of the Year' meet Anna's brand new characters and old favourites all trying to Get Happy!

★★★★★ 'Hilarious' (All Over Adelaide)
★★★★★ 'A stellar comic actor and brilliant writer' (One4Review)
★★★★★ 1/2 'Wonderful' (The Sunday Mail)

VENUE Fat G (Fringe at the Gryphon)
TIME 7.30pm (60min)
PRICES Full \$20.00
C/Stu \$15.00
FA \$14.00
RATING PGR
INFO/TIX fringe.co.nz

DATES MAR S M T W T F S S M T W T F S S M T W T F S S M
1 2 3 4 5 6 7 8 9 10 11 12 13 14 15 16 17 18 19 20 21 22 23



EVENTS



ANNA NICHOLSON: WOMAN OF THE YEAR

ANNA NICHOLSON (UK) **COMEDY**

Winner BEST COMEDY weekly Adelaide Fringe 2019. Meet the nominees for Woman of the Year; Instagram star to competitive vicar. Who will win? You decide! ★★★★★ 'Character comedy at its finest' (EdFest Mag). Edinburgh Fringe sold-out show. Developed with BBC writer James Cary.

VENUE Fat G (Fringe at the Gryphon)
TIME 7.30pm (60min)
PRICES Full \$20.00
C/Stu \$15.00
FA \$14.00
RATING PGR
INFO/TIX fringe.co.nz

DATES MAR 1 2 3 4 5 6 7 8 9 10 11 12 13 14 15 16 17 18 19 20 21 22 23



ANOTHER DAY IN PARADISE

KIRSED PRODUCTIONS (NZ) **THEATRE; SPOKEN WORD/STORYTELLING; COMEDY**

Where is Paradise? And how did she end up so far from it?
This parrot needs to go home! But which way?
Will she eventually find her ticket within? A show about despair and female moustaches,
Another Day in Paradise squawks truth about giving up for good.

VENUE Newtown Community and Cultural Centre
TIME 7.00pm (40min)
PRICES Full \$10.00
C/Stu \$5.00
FA \$7.00
RATING PGR
INFO/TIX fringe.co.nz

DATES FEB 27 28 29 MAR 1 2 3 4 5 6 7 8 9 10 11 12 13 14 15 16 17



ANTISOCIAL SOCIALIST!

COREY HUMM (NZ) **COMEDY; LGBTQIA+**

National raw finalist and award winning political satirist Corey Humm is back with a new hour of cutting topical social/political jokes. He's been banned from the city council, building for life, blocked by mike holdings. Solidarity forever as long as he doesn't have to talk to ya.

VENUE Ivy Bar and Cabaret
TIME 7.30pm (60min)
PRICES KOHA
RATING 18+
INFO/TIX fringe.co.nz

DATES MAR 1 2 3 4 5 6 7 8 9 10 11 12 13 14 15 16 17 18 19 20 21 22 23



BATTLE OF WITS

WELLINGTON IMPROVISATION TROUPE (NZ) **THEATRE; COMEDY; IMPROVISATION**

Intrepid improvisers compete in an all-in all-out multi-night battle, and you choose the winners! We promise theatre made up on the spot by some of Wellington's leading improvisers and some courageous newcomers, in performances that will be sometimes serious, often hilarious and always totally unpredictable.

VENUE Te Auaha - Tapere Iti
TIME 6.30pm (60min)
PRICES Full \$15.00
C/Stu \$10.00
FA \$10.00
RATING No Restrictions
INFO/TIX fringe.co.nz

DATES MAR 1 2 3 4 5 6 7 8 9 10 11 12 13 14 15 16 17 18 19 20 21 22 23

BAY'S ANATOMY

SOAP FACTORY (NZ) **THEATRE; COMEDY; IMPROVISATION**

There's a lot on the line when every patient's the goodest girl, boy, or lizard. Enter NZ's leading animal hospital for an all-day residency of the heart, where medical professionals save lives every hour... but can they save their own? Come for just one episode or stay all day!

VENUE Fat G (Fringe at the Gryphon)
TIME 1pm - 10pm (50min per ep)
PRICES Full \$10.00
FA \$8.00
RATING No Restrictions
INFO/TIX fringe.co.nz

DATES MAR 1 2 3 4 5 6 7 8 9 10 11 12 13 14 15 16 17 18 19 20 21 22 23



THE BEST SHOW IN TOWN IS AT YOUR PLACE EVERY NIGHT

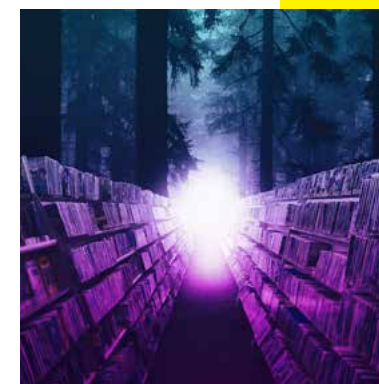
JONNY POTTS (NZ) **THEATRE; SPOKEN WORD/STORYTELLING; OTHER**

A trip through our bright, vanishing city from the winner of the 2015 NZ Fringe Festival Awards for Best Stand Up and Best Writing.

This is a guided tour of the video shops of Wellington.
Adjust your tracking.
Let us go, then.

VENUE BATS Theatre - The Heyday Dome
TIME 9.00pm (60min)
PRICES Full \$20.00
C/Stu \$15.00
FA \$14.00
RATING PGR
INFO/TIX bats.co.nz

DATES MAR 1 2 3 4 5 6 7 8 9 10 11 12 13 14 15 16 17 18 19 20 21 22 23



BOSS SQUAD

MADHOUSE CIRCUS AND POINT & FLEX CIRCUS (AU) **CIRCUS**

Smashing stereotypes while smashing out tricks! This ripper of a show calls out the cat callers while embracing all things weird and acrobatically wonderful. Expect to see high-level circus skills from some of Australia's fearless female performers.
"Triumphant and worthy of a standing ovation" - Weekend Notes ★★★★★

VENUE Te Auaha - Tapere Nui
TIME 9.00pm (60min)
PRICES Full \$25.00
C/Stu \$20.00
FA \$18.00
RATING 13+
INFO/TIX fringe.co.nz

DATES MAR 1 2 3 4 5 6 7 8 9 10 11 12 13 14 15 16 17 18 19 20 21 22 23



CHANGE YOUR OWN LIFE

SCHOOL FOR GIFTED CHILDREN (NZ) **THEATRE; COMEDY**

Has life ever gotten so weird and dumb that you've joined a cult? Jean Sergent has done that, and more, so you don't have to. Join Jean on a cosmic comedic journey through terrible happenings and horrible choices to learn how to Change Your Own Life

VENUE BATS Theatre - The Studio
TIME 7.30pm, 6.30pm (60min)
PRICES Full \$20.00
C/Stu \$15.00
FA \$14.00
RATING 13+
INFO/TIX bats.co.nz

DATES MAR 1 2 3 4 5 6 7 8 9 10 11 12 13 14 15 16 17 18 19 20 21 22 23



EVENTS



CHEAP AND PERFECT DOES ANOTHER ONE

CHEAP AND PERFECT (NZ) THEATRE; COMEDY; PHYSICAL THEATRE

Locally made (with some imported ingredients) Sketch Comedy group, Cheap and Perfect, sold out their debut performance in September, 2019. Now, they are back with some fresh faces and some fresh vegetables (oh no wait, not fresh vegetables sorry). Be sure not to miss out this time!

VENUE The Fringe Bar
TIME 6.00pm (60min)
PRICES Full \$18.00
C/Stu \$13.00
FA \$12.00
RATING 18+
INFO/TIX fringe.co.nz

DATES MAR 1 2 3 4 5 6 7 8 9 10 11 12 13 14 15 16 17 18 19 20 21 22 23



CHILLMORE GIRLS

STARS HOLLOW PRODUCTIONS (NZ) COMEDY

For one hour, experience comedic tales from the lives of these two chill girls. There's more fast-talking snappy pop culture references, wild observations, and awkward dating encounters than your favourite Netflix special.

VENUE Cavern Club
TIME 8.30pm (60min)
PRICES Full \$10.00
FA \$7.00
RATING 18+
INFO/TIX fringe.co.nz

DATES MAR 1 2 3 4 5 6 7 8 9 10 11 12 13 14 15 16 17 18 19 20 21 22 23



D&D LIVE: WHEN DWARVES CRY

DICERATOPS (NZ) COMEDY; IMPROVISATION

Comedians and improvisers leap into the world's most popular fantasy game. Will quick wits and lucky dice see them through? Expect heroic feats, clever plans, and lots of laughs as four unlikely heroes discover what it sounds like... when dwarves cry.

VENUE BATS Theatre - The Random Stage
TIME 10.00pm (90min)
PRICES Full \$18.00
C/Stu \$14.00
FA \$12.00
RATING PGR
INFO/TIX bats.co.nz

DATES MAR 1 2 3 4 5 6 7 8 9 10 11 12 13 14 15 16 17 18 19 20 21 22 23



DEEP AND MEANINGFUL

TOI NGĀKAU PRODUCTIONS (NZ) THEATRE; SPOKEN WORD/STORYTELLING; COMEDY

It's the final night before the Earth is destroyed, so Alayne's throwing a party. Tomorrow we will be eaten by a black hole. It's definitely not her fault.

We don't have much time left. Let's get ruckus.

VENUE BATS Theatre - The Heyday Dome
TIME 7.00pm (60min)
PRICES Full \$20.00
C/Stu \$15.00
FA \$14.00
RATING 13+
INFO/TIX bats.co.nz

DATES MAR 1 2 3 4 5 6 7 8 9 10 11 12 13 14 15 16 17 18 19 20 21 22 23

DIGGING TO CAMBODIA

I KEN SO PRODUCTIONS (KH) THEATRE; PHYSICAL THEATRE

A poignantly warped and sometimes silly journey through, history, memory, and collective memory. A solo show, performed by Sarita, told through music, song and dance. A letter to her past, present and future self, it asks us all 'What is worth remembering?'

VENUE BATS Theatre - The Heyday Dome
TIME 7.00pm (60min)
PRICES Full \$22.00
C/Stu \$17.00
FA \$15.00
RATING PGR
INFO/TIX bats.co.nz

DATES MAR 7 8 9 10 11 12 13 14 15 16 17 18 19 20 21 22 23 24 25 26 27 28 29

DINNER

ECLECTIC (UY) PHYSICAL THEATRE

A dark and surreal piece embodying a home of family violence and hereditary depression; where the parasite of Human Decay takes human shape, and rules as king. Dinner is an abstract piece, filled with raw emotion, that will incite the grinding and gnawing of teeth.

VENUE Te Auaha - Tapere Iti
TIME 9.30pm (60min)
PRICES Full \$15.00
C/Stu \$12.00
FA \$10.00
RATING 16+
INFO/TIX fringe.co.nz

DATES MAR 1 2 3 4 5 6 7 8 9 10 11 12 13 14 15 16 17 18 19 20 21 22 23

DR BARRY ROBERTS HEALTH AND WELLNESS SUMMIT/ PROGRAM (GUIDE): "ASCENDING TO THE NEW YOU"

THE WELLINGTON EUDAIMONIC SOCIETY (NZ) DEvised; THEATRE; LIVE ART

Are you fulfilled? Are you seeking something? Are you seeking fulfillment? Dr Barry Roberts has the answers to these questions - to your questions. The key to the passage of eudaimonia is in your hands.

VENUE Credenza
TIME 6.00pm (90min)
PRICES Full \$10.00
FA \$7.00
RATING No Restrictions
INFO/TIX fringe.co.nz

DATES MAR 1 2 3 4 5 6 7 8 9 10 11 12 13 14 15 16 17 18 19 20 21 22 23

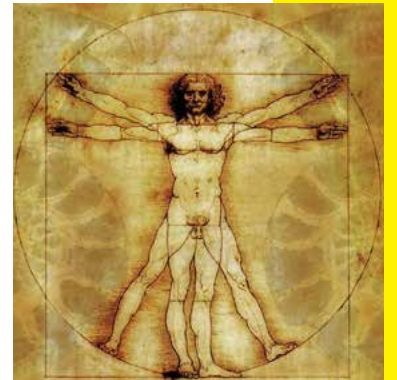
DR DRAMA MAKES A SHOW

THEATRE OF LOVE (NZ) THEATRE

James Wenley lectures about theatre and has a PhD, so should know how to make a show. He promises to only explore subjects he is qualified to: performance, masculinity, whiteness, and himself. A postdramatic solo about knowing the theory, but not knowing what to do with it.

VENUE 93 Kelburn Parade
TIME 5.30pm (60min)
PRICES Full \$10.00
C/Stu \$5.00
FA \$7.00
RATING 16+
INFO/TIX fringe.co.nz

DATES MAR 1 2 3 4 5 6 7 8 9 10 11 12 13 14 15 16 17 18 19 20 21 22 23



EVENTS



ENOUGH

MOVING PARTS NEW ZEALAND (NZ) DANCE; MUSIC; SPOKEN WORD/STORYTELLING

As a young man struggles with depression, he finds despair through the physical and mental turmoil it causes himself and hope through the support from his family and friends.

Content warning: depression, mental health issues.

VENUE BATS Theatre - The Random Stage
TIME 6.30pm, 5.30pm (45min)
PRICES Full \$20.00
C/Stu \$15.00
FA \$14.00
RATING PGR
INFO/TIX bats.co.nz

DATES MAR 1 2 3 4 5 6 7 8 9 10 11 12 13 14 15 16 17 18 19 20 21 22 23



FATAL FAME

DRIPPING BOTTLE (NZ) THEATRE; COMEDY; PHYSICAL THEATRE

"I'd rather be famous than righteous or holy any day"
Fatal Fame is an exploration on the psychology of serial killers and the human need to be memorialized. Fatal Fame follows the character Arabella, her need to be famous and what she is willing to do to get there.

VENUE Te Auaha - Tapere Iti
TIME 6.30pm, 5.30pm (60min)
PRICES Full \$15.00
C/Stu \$12.00
FA \$10.00
RATING 13+
INFO/TIX fringe.co.nz

DATES FEB 27 28 29 | MAR 1 2 3 4 5 6 7 8 9 10 11 12 13 14 15 16 17



THE FATE OF ISEN LIVE D&D RECORDING

NECROPODICON NETWORK (NZ) SPOKEN WORD/STORYTELLING; COMEDY; IMPROVISATION

Save the world of Isen! Fate of Isen is a Dungeons & Dragons podcast featuring NZ comedians fighting to prevent total annihilation. There are barbarians, bards, gods, demons, dice, costumes, and so much more! Join the adventure and get involved in an exciting live recording.

VENUE Cavern Club
TIME 8.00pm (90min)
PRICES Full \$10.00
FA \$7.00
RATING 18+
INFO/TIX fringe.co.nz

DATES MAR 1 2 3 4 5 6 7 8 9 10 11 12 13 14 15 16 17 18 19 20 21 22 23



FIRE LAUGH WITH ME

MY ACCOMPLICE & A MULLED WHINE (NZ) SPOKEN WORD/STORYTELLING; COMEDY

Everything is terrible, so let's have some fun.

Join award-winning comedian and writer Uther Dean for a piping hot fresh hour of jokes, poems and stories to keep us warm as the world falls apart. A tour-de-force of Fringe goodness that is shockingly relatable, screechingly visceral, and cry-laugh hilarious.

VENUE Fat G (Fringe at the Gryphon)
TIME 10.15pm (60min)
PRICES Full \$20.00
C/Stu \$15.00
FA \$14.00
RATING 13+
INFO/TIX fringe.co.nz

DATES MAR 1 2 3 4 5 6 7 8 9 10 11 12 13 14 15 16 17 18 19 20 21 22 23



FRINGE POETRY SLAM

POETRY IN MOTION WELLINGTON (NZ) SPOKEN WORD/STORYTELLING

Poetry in Motion doesn't love anything more than a poetry slam.
People who have never seen a poetry slam walk away in amazement and new appreciation, and people who have been to poetry slams before love hearing all the varied poetry voices.

VENUE The Fringe Bar
TIME 7.30pm (90min)
PRICES KOHA
RATING 18+
INFO/TIX fringe.co.nz

12 poets, 3 rounds.

DATES MAR 1 2 3 4 5 6 7 8 9 10 11 12 13 14 15 16 17 18 19 20 21 22 23



FRINGE FLICKS

NZ FRINGE SPECIAL EVENT FILM

A festival within a festival.

There will be award winners, there will be new practitioners, there will be people testing their craft. Every evening brings a new line up of hand-picked, fresh shorts for your delectation.

VENUE Te Auaha Cinema
TIME 7pm (120min)
PRICES KOHA
RATING No Restrictions
INFO/TIX fringe.co.nz

DATES MAR 1 2 3 4 5 6 7 8 9 10 11 12 13 14 15 16 17 18 19 20 21 22 23



FUNK (AD)

DISCOTHEQUE (NZ) DANCE; MUSIC; THEATRE

The everyday slog brought to you in an all new, freshly curated way we like to call DANCE. Professional dancers take you on a ride through the ups and the downs of what it takes to be the ultimate human. Come and meet the 'Briscoes Lady'- you'll never buy better.

VENUE BATS Theatre - The Random Stage
TIME 6.30pm (50min)
PRICES Full \$22.00
C/Stu \$17.00
FA \$15.00
RATING No Restrictions
INFO/TIX bats.co.nz

DATES MAR 1 2 3 4 5 6 7 8 9 10 11 12 13 14 15 16 17 18 19 20 21 22 23



EVENTS



GIRLZ ON DRUGS

STRAIGHT EDGE PRODUCTIONS (NZ) **DEVISED; THEATRE; COMEDY**

A cow walks into a spaceship. An alien enters the bowels of a cow. The revolving doors get caught on a loop as the fire place burns away all memories of tomorrow. A dynamic comedy duo described as 'life changing'.

VENUE BATS Theatre
- The Heyday
Dome
TIME 8.00pm, 9.00pm
(50min)
PRICES Full \$20.00
C/Stu \$15.00
FA \$14.00
RATING 13+
INFO/TIX bats.co.nz

DATES | **MAR** S M T W T F S S M T W T F S S M
1 2 3 4 5 6 7 8 9 10 11 12 13 14 15 16 17 18 19 20 21 22 23



GOOD CULT

JULES DANIEL (NZ) **MUSIC; COMEDY; LGBTQIA+**

A comedy show that is cleverly disguised as an invitation to join a cult - or is it an invitation to join a cult cleverly disguised as a comedy show? Don't worry, either way it's a good one.

VENUE 42 Devon Street,
Ivy Bar and
Cabaret
TIME 7.30pm (60min)
PRICES KOHA
RATING 16+
INFO/TIX fringe.co.nz

DATES | **MAR** S M T W T F S S M T W T F S S M
1 2 3 4 5 6 7 8 9 10 11 12 13 14 15 16 17 18 19 20 21 22 23

HAY IN THE NEEDLE STACK

WAKA MAORI INC (NZ) **FILM; SPOKEN WORD/STORYTELLING; PHYSICAL THEATRE**

'Hay in the Needle Stack' follows hopeless romantic, kiwi-boy Harvey Meservy as he journeys across the globe to search for his love, Sophia who has lost contact with him 3 months into her O.E. On Harvey's quest he crosses paths with a variety of strange and absurd characters whom either help or hinder his chance of finding his lass.

VENUE Te Whaea
Dance and
Drama Centre
- Basement
Theatre
PRICES KOHA
TIME 7.00pm (45min)
RATING 16+
INFO/TIX fringe.co.nz

DATES | **MAR** S M T W T F S S M T W T F S S M
1 2 3 4 5 6 7 8 9 10 11 12 13 14 15 16 17 18 19 20 21 22 23



HELLO DARLINGS! WITH PAMELA HANCOCK

PAMELA HANCOCK (NZ) **THEATRE; CABARET; LGBTQIA+**

Come over for a cuppa and enter the world of everyone's favourite aunty from Bulls, Mrs. Pamela Hancock in "Hello Darlings!"

VENUE Ivy Bar and
Cabaret
TIME 9.00pm (60min)
PRICES Full \$18.00
C/Stu \$15.00
FA \$12.00
RATING 16+
INFO/TIX fringe.co.nz

When her hubby Trevor decides to spend it at the pub, Pam wonders if she could do better...

Written and performed by Cole Hampton.

DATES | **MAR** S M T W T F S S M T W T F S S M
1 2 3 4 5 6 7 8 9 10 11 12 13 14 15 16 17 18 19 20 21 22 23



THE HISTORY BOY

KICKIN' RAD (NZ) **THEATRE; IMPROVISATION**

All of history is just stories we tell each other to understand the world, and every story is at least in part about the person doing the telling. Performed by the award-winning Matt Powell (Awkward Threesome, Soap Factory) and inspired by the imperfect recollections of performer and audience alike.

VENUE Te Auaha -
Tapere Iti
TIME 6.30pm (50min)
PRICES Full \$20.00
C/Stu \$15.00
FA \$12.00
RATING No Restrictions
INFO/TIX fringe.co.nz

DATES | **MAR** S M T W T F S S M T W T F S S M
1 2 3 4 5 6 7 8 9 10 11 12 13 14 15 16 17 18 19 20 21 22 23



HORNY & CONFUSED

BIG ESTROGEN ENERGY PRODUCTIONS (NZ) **MUSIC; COMEDY**

Horny? Confused? Yes.

A night of fresh new stand-up and comedy songs from Wellington-based duo, Charlotte Glucina and Katie Hill. Looking at what it's like to navigate female sexuality in 2020 with horny spice and confused spice, come to the show to see who's who.

VENUE The Fringe Bar
TIME 9.00pm (60min)
PRICES Full \$15.00
C/Stu \$12.00
FA \$10.00
6+ \$10.00
RATING 18+
INFO/TIX fringe.co.nz

DATES | **MAR** S M T W T F S S M T W T F S S M
1 2 3 4 5 6 7 8 9 10 11 12 13 14 15 16 17 18 19 20 21 22 23



I'M WALKEN HERE

PRESENT COMPANY LIVE (NZ) **THEATRE; PUPPETRY; COMEDY**

From the makers of cult hit Puppet Fiction comes a brand new show featuring a man in this thirties dressed in a suit puppeteering a 60cm marionette of famous screen actor Christopher Walken doing a terrible job of recounting film plot lines, with prizes.

VENUE BATS Theatre -
The Studio
TIME 9.30pm, 8.30pm
(60min)
PRICES Full \$22.00
C/Stu \$17.00
FA \$15.00
RATING 16+
INFO/TIX bats.co.nz

DATES | **MAR** S M T W T F S S M T W T F S S M
1 2 3 4 5 6 7 8 9 10 11 12 13 14 15 16 17 18 19 20 21 22 23



INQUIET MOMENTS

DO THE THING PRODUCTIONS (NZ) **THEATRE; PHYSICAL THEATRE**

Inquiet Moments is a piece about anxiety, how it affects us, and those we love. Memories and fears flitter through Riley's head while she's caught in the midst of a panic attack but as she tries to make sense of the scenes that pass by, two figures overshadow her thoughts.

VENUE Te Auaha -
Tapere Iti
TIME 9.30pm (60min)
PRICES Full \$18.00
C/Stu \$16.00
FA \$12.00
RATING PGR
INFO/TIX fringe.co.nz

DATES | **MAR** S M T W T F S S M T W T F S S M
1 2 3 4 5 6 7 8 9 10 11 12 13 14 15 16 17 18 19 20 21 22 23





INSERT TITLE HERE

TATJANA T (NZ) **MUSIC; CABARET; COMEDY**

Ever put off finishing that important final essay, only to stay up till 3am the night before it's due? Having procrastinated writing her show, Tatjana T sets out to create a hilarious one-woman cabaret. Will she succeed in pulling off a solo show? Your guess is as good as hers!

VENUE Ivy Bar and Cabaret
TIME 7.30pm (60min)
PRICES Full \$20.00
C/Stu \$15.00
FA \$14.00
RATING 13+
INFO/TIX fringe.co.nz

DATES FEB T F S 27 28 29 | MAR S M T W T F S S M T W T F S S M T 1 2 3 4 5 6 7 8 9 10 11 12 13 14 15 16 17



LASER KIWI #2

LASER KIWI (NZ) **CIRCUS; COMEDY; PHYSICAL THEATRE**

The creators of award winning show "Laser Kiwi" are proud to present the creatively named "Laser Kiwi #2." Join the worlds only "Surreal Sketch Circus Troupe" on a wild ride as they attempt to bring people closer together - one olive at a time.

VENUE Te Auaha - Tapere Nui
TIME 7.30pm (55min)
PRICES Full \$23.00
C/Stu \$20.00
FA \$18.00
6+ \$20.00
10+ \$18.00
RATING 13+
INFO/TIX fringe.co.nz

DATES MAR S M T W T F S S M T W T F S S M T W T F S S M 1 2 3 4 5 6 7 8 9 10 11 12 13 14 15 16 17 18 19 20 21 22 23



LEGEND

ACTS OF KINDNESS THEATRE (NZ) **MUSIC; THEATRE; FAMILY**

Real men, Real Stories, Real Funny.

What does it mean to be a man in Aotearoa 2020? LEGEND explores the lives of real kiwi men from sporting heroes, musicians and scientists to teachers, construction workers and fathers to ask us, what does it really mean to be a legend?

VENUE BATS Theatre - The Random Stage
TIME 6.30pm, 5.30pm (60min)
PRICES Full \$18.00
C/Stu \$14.00
FA \$12.00
RATING No Restrictions
INFO/TIX bats.co.nz

DATES MAR S M T W T F S S M T W T F S S M T W T F S S M 1 2 3 4 5 6 7 8 9 10 11 12 13 14 15 16 17 18 19 20 21 22 23



LITA

DAWBZY PRODUCTIONS (NZ) **DEVISED; MUSIC; THEATRE**

Gloria Hoyle hit her friend over the head with an eisel in an Ecuadorian Nunnery, circa 1930 something. Weaving together music, TeleNovela melodrama, verbatim storytelling, the occasional splash of ridiculousness and a whole lot of heart, Lucy goes on a solo investigation to find out what happened next.

VENUE BATS Theatre - The Studio
TIME 7.30pm, 6.30pm (45min)
PRICES Full \$18.00
C/Stu \$14.00
FA \$13.00
RATING No Restrictions
INFO/TIX bats.co.nz

DATES MAR S M T W T F S S M T W T F S S M T W T F S S M 1 2 3 4 5 6 7 8 9 10 11 12 13 14 15 16 17 18 19 20 21 22 23

LUKE SCOTT'S LITTLE THEATRE OF BIG DREAMS

HORSE WITH NO NAME (NZ) **THEATRE; SPOKEN WORD/STORYTELLING; PUPPETRY**

Luke Scott's Little Theatre of Big Dreams is proud to present a trilogy of adventure, comedy and romance. Come and watch as the marvellous Luke Scott transports you to a world of shadows and light, in this whimsical shadow puppetry piece inspired by the magic of the everyday.

VENUE Luke Scott's Little Theatre of Big Dreams
TIME 6.30pm, 8.30pm, 2.00pm (45min)
PRICES KOHA
RATING 13+
INFO/TIX fringe.co.nz

DATES MAR S M T W T F S S M T W T F S S M T W T F S S M 1 2 3 4 5 6 7 8 9 10 11 12 13 14 15 16 17 18 19 20 21 22 23

LUKE, WHO'S TALKING

LUKE CALLAGHAN (NZ) **COMEDY**

American standup Luke Callaghan is a water balloon containing an Olympic-size swimming pool worth of jokes. Wayyy beyond capacity. If even a fly lands on him he'll pop, splattering gags and observations all over the ceiling. Every row of the audience is within the "splash zone". BYO ponchos & snorkels.

VENUE The PowWow Room
TIME 6.00pm (60min)
PRICES Full \$10.00
C/Stu \$8.00
FA \$7.00
RATING 18+
INFO/TIX fringe.co.nz

DATES MAR S M T W T F S S M T W T F S S M T W T F S S M 1 2 3 4 5 6 7 8 9 10 11 12 13 14 15 16 17 18 19 20 21 22 23

MAGNUS STEELE

AUSTIN HARRISON (NZ) **THEATRE; COMEDY; IMPROVISATION**

Infamous private eye Magnus Steele investigates the crime of the century through interrogations, jazz, and beat poetry but here's the catch: all the victims, suspects, and witnesses are played by YOU! Come prepared for hilarity, bad accents, and to be a part of the show!

VENUE Circus Bar
TIME 7.30pm (50min)
PRICES Full \$10.00
FA \$7.00
RATING 13+
INFO/TIX fringe.co.nz

DATES MAR S M T W T F S S M T W T F S S M T W T F S S M 1 2 3 4 5 6 7 8 9 10 11 12 13 14 15 16 17 18 19 20 21 22 23

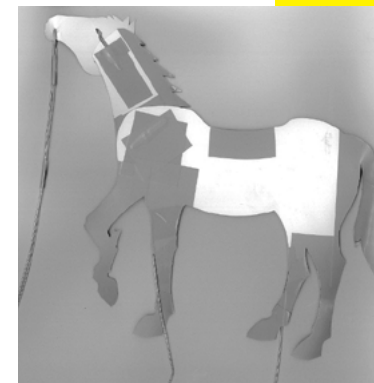
THE MEDICINE STAND-UP COMEDY

THE MEDICINE MAFIA (CA) **COMEDY**

Wellington's #1 mid-range stand-up comedy show!

VENUE The Fringe Bar
TIME 7.00pm (105min)
PRICES Full \$10.00
FA \$7.00
RATING 18+
INFO/TIX fringe.co.nz

DATES MAR S M T W T F S S M T W T F S S M T W T F S S M 1 2 3 4 5 6 7 8 9 10 11 12 13 14 15 16 17 18 19 20 21 22 23





THE MITCHELL HOLMES VARIETY HOUR

MITCHELL HOLMES (NZ) **COMEDY**

29 year-old curmudgeon Mitchell Holmes is having a party! His debut Fringe show is guaranteed to make you laugh, or else! Come along and be swept away in a deluge of laughter. It's a flash flood of hilarity you won't want to miss! Also co-starring Michael Ross.

VENUE The PowWow Room
TIME 6.00pm (60min)
PRICES Full \$10.00
C/Stu \$8.00
FA \$7.00
RATING 18+
INFO/TIX fringe.co.nz

DATES MAR 1 2 3 4 5 6 7 8 9 10 11 12 13 14 15 16 17 18 19 20 21 22 23



MY STUPID F*CKING HEART

SISSY WOLF PRODUCTIONS (NZ) **THEATRE; COMEDY**

A new sketch comedy show by people who have never made a sketch comedy show before but have done well in other things they have done. Written and performed by Anya Tate-Manning, Isobel MacKinnon, Maria Williams and Tessa Waters and directed by Jane Yonge.

VENUE BATS Theatre - The Heyday Dome
TIME 9.00pm, 8.00pm (60min)
PRICES Full \$22.00
C/Stu \$17.00
FA \$15.00
RATING 13+
INFO/TIX bats.co.nz

DATES FEB 27 28 29 MAR 1 2 3 4 5 6 7 8 9 10 11 12 13 14 15 16 17



NEW DANCE GROUP

CHOREOCO BY FOOTNOTE (NZ) **DANCE; THEATRE**

Combining fresh choreographic voices with a short-term company of remarkable dance artists, ChoreoCo by Footnote is designed especially for Fringe. With an eye for the oddities of familiar scenes in domestic and public spaces, this years ChoreoCo choreographers, Josie Archer and Kosta Bogoievski, bring these everyday observations into the theatre.

VENUE Circa Theatre
TIME 7.30pm, 4.30pm (60min)
PRICES Full \$22.00
C/Stu \$16.00
FA \$15.00
RATING No Restrictions
INFO/TIX circa.co.nz

DATES MAR 1 2 3 4 5 6 7 8 9 10 11 12 13 14 15 16 17 18 19 20 21 22 23



A NIGHT OUT WITH THE BOYS

OBOYS (NZ) **THEATRE; COMEDY**

Two young performers put up two contrasting but complementary pieces on their experiences and views of modern-day masculinity.

VENUE Te Auaha - Tapere Iti
TIME 9.30pm, 8.30pm (50min)
PRICES Full \$15.00
C/Stu \$12.00
FA \$10.00
RATING 16+
INFO/TIX fringe.co.nz

DATES FEB 27 28 29 MAR 1 2 3 4 5 6 7 8 9 10 11 12 13 14 15 16 17

OUT OF THE BOX

OUT OF THE BOX (NZ) **COMEDY**

'Out of the Box' is a three woman one box show in which anything could happen. Through high energy stand up comedy Shannon, Brenda and Miranda take you on a fun journey as they set out to explore the nature of expectations as they resist the need to be 'boxed in'.

VENUE The PowWow Room
TIME 8.30pm (60min)
PRICES Full \$15.00
C/Stu \$10.00
FA \$10.00
RATING 18+
INFO/TIX fringe.co.nz

DATES MAR 1 2 3 4 5 6 7 8 9 10 11 12 13 14 15 16 17 18 19 20 21 22 23

PALOMA AND THE DO OF DEATH

TOM TUKE (NZ) **THEATRE; PUPPETRY; COMEDY**

What happens when Paloma, a castaway, shares a desert island with the inaugural Grim Reapers' Staff Party? She must dance the line between certain death and uncertain Deaths. 'Paloma and the Do of Death' is a marionette comedy, in a small theatre constructed from recycled timber, fabric and driftwood.

VENUE See website for details
PRICES Full \$15.00
C/Stu \$10.00
FA \$10.00
RATING PGR
INFO/TIX fringe.co.nz

DATES FEB 27 28 29 MAR 1 2 3 4 5 6 7 8 9 10 11 12 13 14 15 16 17

POE'D

WELLINGTON IMPROVISATION TROUPE (NZ)
SPOKEN WORD/STORYTELLING; COMEDY; IMPROVISATION

Did Edgar Allen Poe fake his death then flee to write epic gothic horrifying romantic tragic stories among the phlegmatic people of the farthest flung corner of the British Empire?? Find out as each night a different narrator channels the tortured author to bring an original improvised tale to life.

VENUE Te Auaha - Tapere Iti
TIME 8.00pm, 7.00pm (60min)
PRICES Full \$17.00
C/Stu \$12.00
FA \$11.00
RATING No Restrictions
INFO/TIX fringe.co.nz

DATES FEB 27 28 29 MAR 1 2 3 4 5 6 7 8 9 10 11 12 13 14 15 16 17

PRINCESS BOY WONDER

HUGO GRRRL & A MULLED WHINE (NZ) **THEATRE; CABARET; LGBTQIA+**

Every boy deserves to feel beautiful. Join legendary drag king Hugo Grrrl for his spectacular solo show debut - a glittering and hilarious campy cabaret and courageous transgender coming-of-age tale all at once. Princess Boy Wonder is a fierce and frank glamour party not to be missed. Directed by Lori Leigh.

VENUE BATS Theatre - The Random Stage
TIME 6.30pm (60min)
PRICES Full \$25.00
C/Stu \$20.00
FA \$18.00
RATING 13+
INFO/TIX bats.co.nz

DATES MAR 1 2 3 4 5 6 7 8 9 10 11 12 13 14 15 16 17 18 19 20 21 22 23





PUBERTY THE MUSICAL

WELLINGTON YOUNG ACTORS (NZ) **THEATRE**

Hey kiddo! Come sit down. Can we talk for a sec? You're growing up now and you might notice that your body is going through some changes. That can be kinda weird and maybe a bit scary. If you've got any questions- I'm gonna leave this book right here.

VENUE BATS Theatre
- The Heyday
Dome
TIME 7.00pm, 6.00pm
(60min)
PRICES Full \$22.00
C/Stu \$17.00
FA \$15.00
RATING No Restrictions
INFO/TIX bats.co.nz

DATES MAR S M T W T F S S M T W T F S S M
1 2 3 4 5 6 7 8 9 10 11 12 13 14 15 16 17 18 19 20 21 22 23



RADICOOOL YOUTH!

SPIT TAKE (NZ) **THEATRE; COMEDY**

You're invited to the DOPEST Youth Group in town, radiCOOL Youth! Hosted by the totally relatable Jayden McIntyre! There'll be SICK songs, LIT sermons, FRESH games and possibly an EPIC identity crisis! So, grab your Fidget Spinners and vapes for a WICKED AF night!

VENUE Te Auaha -
Tapere Iti
TIME 6.30pm (55min)
PRICES Full \$15.00
C/Stu \$12.00
FA \$10.00
RATING 13+
INFO/TIX fringe.co.nz

DATES MAR S M T W T F S S M T W T F S S M
1 2 3 4 5 6 7 8 9 10 11 12 13 14 15 16 17 18 19 20 21 22 23



SALTWATER BATH

DUCT TAPED ON (NZ) **DEVISED; THEATRE**

After the death of her mother, Olivia struggles to keep her footing. As she falls further into grief her denial threatens to destroy her remaining relationships. How long can you hold your breath? Do you even know if you are floating or drowning?

VENUE Fat G (Fringe at
the Gryphon)
TIME 9.00pm (60min)
PRICES Full \$15.00
C/Stu \$12.00
FA \$10.00
RATING 13+
INFO/TIX fringe.co.nz

DATES MAR S M T W T F S S M T W T F S S M
1 2 3 4 5 6 7 8 9 10 11 12 13 14 15 16 17 18 19 20 21 22 23



SARA AND JORDAN AREN'T SUPPOSED TO BE HERE

HIRSCH & HAMEL (NZ) **SPOKEN WORD/STORYTELLING; COMEDY; LITERATURE**

Jordan and Sara have started a band. Their posters are everywhere, their first gig is sold out and neither of them plays an instrument. Hirsch & Hamel, the UK and NZ poetry slam champions present a comedy show about imposter syndrome containing almost zero poetry.

VENUE The PowWow
Room
TIME 6.00pm (60min)
PRICES Full \$15.00
C/Stu \$12.00
FA \$10.00
RATING 13+
INFO/TIX fringe.co.nz

DATES MAR S M T W T F S S M T W T F S S M
1 2 3 4 5 6 7 8 9 10 11 12 13 14 15 16 17 18 19 20 21 22 23

SEXY GHOST BOY

FIDK (NZ) **THEATRE; COMEDY; IMPROVISATION**

Unable to get into heaven because he is soo sexy, the sexy ghost boy haunts spots of great romance because limbo is so unsexy.

George Fenn (Spirit of the Fringe 2017) returns to Wellington on their national tour with their wordless interactive comedy phenomenon.

VENUE Circus Bar
TIME 7.00pm (60min)
PRICES Full \$20.00
C/Stu \$15.00
FA \$14.00
RATING 18+
INFO/TIX fringe.co.nz

DATES MAR S M T W T F S S M T W T F S S M
1 2 3 4 5 6 7 8 9 10 11 12 13 14 15 16 17 18 19 20 21 22 23



SHE + THEY

ZIR PRODUCTIONS (NZ) **SPOKEN WORD/STORYTELLING; IMPROVISATION; LGBTQIA+**

Transgender couple Willow Lunicke (SHE) and Ren Lunicke (THEY) are "small-town famous." In the style of talk-shows and reality television, the rural Northland couple interview one another and answer audience questions with sketch humour and gritty detail about their unique transitions, living rurally, and how love evolves with us.

VENUE Aunty Dana's Op
Shop
TIME 6.30pm (60min)
PRICES Full \$15.00
C/Stu \$10.00
FA \$10.00
RATING PGR
INFO/TIX fringe.co.nz

DATES MAR S M T W T F S S M T W T F S S M
1 2 3 4 5 6 7 8 9 10 11 12 13 14 15 16 17 18 19 20 21 22 23



SHOULD HAVE SAID NO

BLUE FLICKER PRODUCTIONS (NZ) **DEVISED; THEATRE; PHYSICAL THEATRE**

What happens when you can't trust your own memories?
Pan wakes up with memories swimming just out of her reach. Lo insists that nothing happened last night. Pan becomes increasingly worried about the bruising on her knees, but whenever she brings it up Lo pushes it further away.

VENUE BATS Theatre
- The Heyday
Dome
TIME 7.00pm (60min)
PRICES Full \$20.00
C/Stu \$15.00
FA \$14.00
RATING 16+
INFO/TIX bats.co.nz

DATES MAR S M T W T F S S M T W T F S S M
1 2 3 4 5 6 7 8 9 10 11 12 13 14 15 16 17 18 19 20 21 22 23



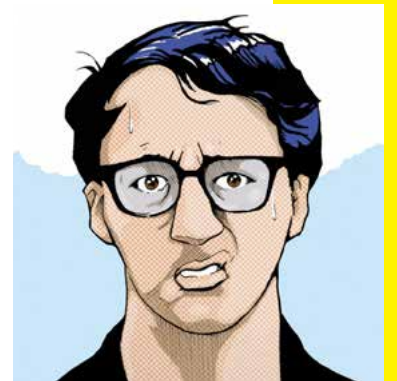
SIMON CAINE: EVERY ROOM BECOMES A PANIC ROOM WHEN YOU OVERTHINK ENOUGH

SIMON CAINE (UK) **VISUAL ART; SPOKEN WORD/STORYTELLING; COMEDY; LUCKY DIP**

Editors' Choice Award 2019 winner comedian Simon Caine brings his 5 ★ (ThreeWeeks) solo show to the New Zealand Fringe after a sell-out run at the Edinburgh Fringe.

VENUE Cavern Club
TIME 8.30pm (60min)
PRICES Full \$20.00
C/Stu \$18.00
FA \$17.00
RATING 16+
INFO/TIX fringe.co.nz

DATES MAR S M T W T F S S M T W T F S S M
1 2 3 4 5 6 7 8 9 10 11 12 13 14 15 16 17 18 19 20 21 22 23



EVENTS



SISTERHOOD: A CIRCUS CELEBRATION

TANGATA CIRCUS COMPANY (NZ) **THEATRE; CIRCUS; CABARET**

Sequins. Legwarmers. Sass. SISTERHOOD is an explosion of colour and music inspired by the bodacious beats of the 70's and 80's. Major attitude and thrilling circus skills come together in the abandoned love shack to proclaim a message of unapologetic self-empowerment.

Tangata Circus Company just wants to have fun!

VENUE Te Auaha - Tapere Nui
TIME 7.30pm, 3.30pm (50min)
PRICES Full \$25.00
 C/Stu \$20.00
 FA \$17.50
RATING No Restrictions
INFO/TIX fringe.co.nz

DATES FEB T F S | MAR S M T W T F S S M T W T F S S M T
 27 28 29 1 2 3 4 5 6 7 8 9 10 11 12 13 14 15 16 17



SITUATIONS IN PLAY

NZSD GRADUATE COMPANY (NZ) **DANCE; THEATRE; IMPROVISATION**

Presented by Toi Poneke dance residency and the NZSD Graduate Company comes 'Situations In Play'. An immersive dance performance involving the premiere of three groundbreaking new works choreographed by Bjorn Aslund, Alessia Augello and Alec Katsourakis, graduates of the New Zealand School of Dance.

VENUE Te Whaea Dance and Drama Centre
TIME 7.30pm, 2.00pm (60min)
PRICES Full \$20.00
 C/Stu \$15.00
 FA \$14.00
RATING No Restrictions
INFO/TIX fringe.co.nz

DATES MAR S M T W T F S S M T W T F S S M
 1 2 3 4 5 6 7 8 9 10 11 12 13 14 15 16 17 18 19 20 21 22 23

A SOLARPUNK HISTORY OF COMPUTING

ZACH MANDEVILLE (NZ) **SPOKEN WORD/STORYTELLING; COMEDY; ONLINE**

A funny and mystic tour through the history of computing, uncovering the natural magic and romance always present beneath our screens. Strange, scholarly, and a good time? You best believe it!

VENUE Fat G (Fringe at the Gryphon)
TIME 6.00pm (60min)
PRICES Full \$10.00
 FA \$7.00
RATING No Restrictions
INFO/TIX fringe.co.nz

DATES MAR S M T W T F S S M T W T F S S M
 1 2 3 4 5 6 7 8 9 10 11 12 13 14 15 16 17 18 19 20 21 22 23



SORRY FOR YOUR LOSS

CIAN GARDNER (NZ) **DEVISED; THEATRE; PHYSICAL THEATRE**

Sorry For Your Loss is a fresh new take on the everlasting journey of figuring out who you are... This one-woman show was written and is performed by exciting up-and-coming artist, Cian Gardner. It is her story of growing up, and explores the effects of having a sometimes-there-mostly-not Dad.

VENUE Circa Theatre
TIME 7.30pm (60min)
PRICES Full \$25.00
 C/Stu \$20.00
 FA \$18.00
RATING 13+
INFO/TIX circa.co.nz

DATES MAR S M T W T F S S M T W T F S S M
 1 2 3 4 5 6 7 8 9 10 11 12 13 14 15 16 17 18 19 20 21 22 23



STANDARD ACTS

KARIN MCCracken, MEG ROLLANDI (IE) **VISUAL ART; DEVISED; THEATRE**

Karin has a job to do. Luckily her friend can help. Or can he?

Standard Acts is a development season of new contemporary performance that zeroes in on daily interactions. Interrogating power and privilege, Standard Acts explores 'normal' and asks what is possible - before time runs out.

VENUE BATS Theatre - The Heyday Dome
TIME 7.00pm (60min)
PRICES Full \$20.00
 C/Stu \$16.00
 FA \$14.00
RATING PGR
INFO/TIX bats.co.nz

DATES MAR S M T W T F S S M T W T F S S M T
 1 2 3 4 5 6 7 8 9 10 11 12 13 14 15 16 17 18 19 20 21 22 23



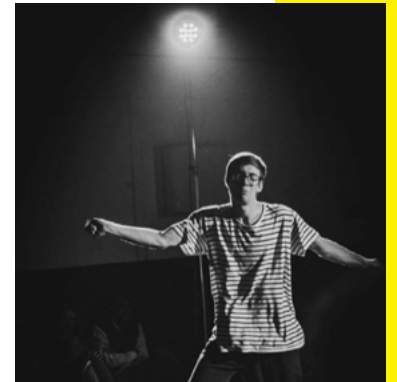
STEPPING UP

DANIEL NODDER (NZ) **DANCE; DEVISED; THEATRE**

In his debut solo show, Daniel Nodder (Order Up, Undertow Quartet, Projekt Team) brings together dance and storytelling to explore his journey through the world of artistic expression. Revel in explosive choreography, heart-warming stories and embarrassing archive footage in this multi-discipline extravaganza. Daniel is about to step things up!

VENUE Te Auaha - Tapere Iti
TIME 9.30pm (60min)
PRICES Full \$20.00
 C/Stu \$15.00
 FA \$14.00
RATING PGR
INFO/TIX fringe.co.nz

DATES MAR S M T W T F S S M T W T F S S M T
 1 2 3 4 5 6 7 8 9 10 11 12 13 14 15 16 17 18 19 20 21 22 23



creative nz
 ARTS COUNCIL OF NEW ZEALAND TOI AOTEAROA

Arts matter to New Zealanders every day

ARTS COUNCIL OF NEW ZEALAND TOI AOTEAROA
 We encourage, promote and support the arts in New Zealand for the benefit of all New Zealanders
www.creativenz.govt.nz | info@creativenz.govt.nz

Photo: Cuba Dupa 2019, Photographer is Oliver Crawford



STEVE

DARK MATTER (NZ) THEATRE; COMEDY

Following some incredibly unusual conspiracy theories at work, Steve is now unemployed. Neighbor Eleanor - struggling as a solo parent - has no time for these theories... or Steve.

VENUE Valhalla
TIME 6.00pm (45min)
PRICES KOHA
RATING 18+
INFO/TIX fringe.co.nz

Is the end of the world really here?
Can Eleanor put aside her differences
and accept Steve's truth?

DATES | MAR | S M T W T F S S M T W T F S S M
1 2 3 4 5 6 7 8 9 10 11 12 13 14 15 16 17 18 19 20 21 22 23



TANDY DANDY

LAURA GAUDIN (NZ) PHYSICAL THEATRE; FAMILY

All is mundane. But did you consider looking down the drain?

VENUE Wellington Chocolate Factory
TIME 6.00pm, 5.00pm (20min)
PRICES KOHA
RATING No Restrictions
INFO/TIX fringe.co.nz

An absurd piece of physical theatre exploring how something as simple as a 'Tandy-12' 1980s computerised game arcade might be able to give someone the courage to face the outside world.

DATES | MAR | S M T W T F S S M T W T F S S M
1 2 3 4 5 6 7 8 9 10 11 12 13 14 15 16 17 18 19 20 21 22 23



TEN AND TWO-THIRDS (YEARS)

HARD SLEEPER THEATRE COLLECTIVE (NZ) THEATRE; PHYSICAL THEATRE

Now... now... now... if not now, when?
Two travellers explore an uncertain near future, witnessing scenes of beauty, excess, desolation. The show is performed in slow tempo to a rich soundscape but with no spoken language. Hope? Despair? Both are luxuries. What will you do with this 'now'?

VENUE BATS Theatre - The Random Stage
TIME 8.30pm, 7.30pm (60min)
PRICES Full \$20.00
C/Stu \$15.00
FA \$14.00
RATING No Restrictions
INFO/TIX bats.co.nz

DATES | FEB | T F S | MAR | S M T W T F S S M T W T F S S M T
27 28 29 1 2 3 4 5 6 7 8 9 10 11 12 13 14 15 16 17



THIS IS NOT A DATE!

COREY HUMM (NZ) COMEDY; LGBTQIA+

This is Not a Date is a double bill show starring National raw finalist and cutting political satirist Corey Humm and his straight bff Surrealist Ben Kent. They bicker like an old married couple. These two award winning comics will leave you in stitches and happy they aren't dating.

VENUE The PowWow Room
TIME 8.30pm (60min)
PRICES Full \$10.00
C/Stu \$9.00
FA \$7.00
RATING 18+
INFO/TIX fringe.co.nz

DATES | MAR | S M T W T F S S M T W T F S S M
1 2 3 4 5 6 7 8 9 10 11 12 13 14 15 16 17 18 19 20 21 22 23

THREE COURSE COMEDY

KRIS BEATTIE, SEVERIN GOURLEY AND LORRAINE WARD (NZ) COMEDY

After a successful season at last year's Fringe Festival, Three Course Comedy is back; fresh and nutritious for 2020. 'Seasoned' Wellington comedians Kris Beattie, Severin Gourley and Lorraine Ward take up the mic for an hour of delicious stand up comedy. Please note: these comedians are NOT edible.

VENUE The PowWow Room
TIME 8.30pm (60min)
PRICES Full \$15.00
C/Stu \$10.50
FA \$10.50
RATING 18+
INFO/TIX fringe.co.nz

DATES | MAR | S M T W T F S S M T W T F S S M
1 2 3 4 5 6 7 8 9 10 11 12 13 14 15 16 17 18 19 20 21 22 23



TRAVELS WITH MY EX

SHANNON GILLIES (NZ) COMEDY

The event is a story teller comedy show where people talk and joke about trips they've gone on with their exes - all the heartache and humour that comes with those decisions are explored.

VENUE Heyday Beer Co.
TIME 8.00pm (60min)
PRICES Full \$15.00
C/Stu \$10.00
FA \$10.00
RATING 18+
INFO/TIX fringe.co.nz

DATES | MAR | S M T W T F S S M T W T F S S M
1 2 3 4 5 6 7 8 9 10 11 12 13 14 15 16 17 18 19 20 21 22 23



TRY HARD

HERSELF PRODUCTIONS (NZ) COMEDY

She's still smart, she's still sassy, she's still short but life is nothing like it used to be. Jim Stanton is back behind the mic delivering a night of standup, blending salty sass and jokey jokes. A comedy show about life's challenges and the things that make us laugh.

VENUE Raglan Roast Coffee
TIME 7.30pm (60min)
PRICES Full \$17.00
C/Stu \$15.00
FA \$11.00
RATING 18+
INFO/TIX fringe.co.nz

DATES | MAR | S M T W T F S S M T W T F S S M
1 2 3 4 5 6 7 8 9 10 11 12 13 14 15 16 17 18 19 20 21 22 23



#USTWO

A MULLED WHINE (NZ) THEATRE

Six decades of sisterhood.

From childhood in the fifties, adolescence in the sixties, motherhood in the eighties, and plenty more since then - NZ theatre & politics icons Sarah & Catherine Delahunty take a sharp feminist look back at their lives.

VENUE BATS Theatre - The Heyday Dome
TIME 7.00pm, 6.00pm (60min)
PRICES Full \$22.00
C/Stu \$17.00
FA \$15.00
RATING No Restrictions
INFO/TIX bats.co.nz

DATES | MAR | S M T W T F S S M T W T F S S M
1 2 3 4 5 6 7 8 9 10 11 12 13 14 15 16 17 18 19 20 21 22 23





UTOPIA #9

KIT REILLY (NZ) **DANCE**

Black Mirror meets virtuosity in Utopia #9 - a sterile dystopia, where technology has surpassed human intelligence and become our governing figure. Society has fallen victim to this artificial entity but resistance emerges in the search for humanity. Created by Kit Reilly in collaboration with international dance artists.

VENUE Te Auaha - Tapere Nui
TIME 6.00pm (50min)
PRICES Full \$24.90
C/Stu \$19.90
FA \$16.00
RATING PGR
INFO/TIX fringe.co.nz

DATES MAR 1 2 3 4 5 6 7 8 9 10 11 12 13 14 15 16 17 18 19 20 21 22 23



WAITING FOR SHARK WEEK

OBTUSE MOOSE (NZ) **THEATRE; COMEDY; LGBTQIA+**

A brand-new feminist comedy show. Vagimir and Estrogen are stuck in the Patriarchy waiting for the arrival of Equality. Through silly sketches, fun clowns and reimagined bits of plays/films, we'll explore how some dead men (#notalldeadmen) impose their sexism from beyond the grave and action vs inaction in Aotearoa, 2020.

VENUE BATS Theatre - The Random Stage
TIME 8.30pm, 7.30pm (60min)
PRICES Full \$22.00
C/Stu \$17.00
FA \$15.00
RATING 13+
INFO/TIX bats.co.nz

DATES MAR 1 2 3 4 5 6 7 8 9 10 11 12 13 14 15 16 17 18 19 20 21 22 23



CARTEL COMEDY PRESENTS
WHAT IS NORMAL?
FEATURING
THE MAN SIMPLY KNOWN AS BOB

WHAT IS NORMAL?

CARTEL COMEDY (NZ) **COMEDY**

What is normal? A new comedy show from The Man Simply Known as Bob. Come along on a journey as we explore what normal is and what it means to different people.

VENUE Ivy Bar and Cabaret
TIME 8.30pm (60min)
PRICES Full \$10.00
C/Stu \$8.00
FA \$7.00
RATING 18+
INFO/TIX fringe.co.nz

DATES MAR 1 2 3 4 5 6 7 8 9 10 11 12 13 14 15 16 17 18 19 20 21 22 23



WHY ME?

KNOT THEATRE (NZ) **COMEDY; PHYSICAL THEATRE**

Three solos, one issue, a large box sits centre stage glowing from the inside out. We are brought into the lives of three individuals, and follow as they feel isolated in the problems they face. Little do they know that two others are simultaneously feeling the same way.

VENUE BATS Theatre - The Heyday Dome
TIME 9.00pm (60min)
PRICES Full \$20.00
C/Stu \$15.00
FA \$14.00
RATING No Restrictions
INFO/TIX bats.co.nz

DATES MAR 1 2 3 4 5 6 7 8 9 10 11 12 13 14 15 16 17 18 19 20 21 22 23

WILL & BRENDAN ARE CANCELLED

ROSE & MCGRATH (NZ) **THEATRE; COMEDY**

Stop us if you've heard this one before. Two straight white males doing sketch comedy. Society asks, 'so, have you got anything relevant to contribute?'. Will and Brendan reply, 'no, but do you have anything better to do tonight?'

VENUE Fat G (Fringe at the Gryphon)
TIME 9.00pm (60min)
PRICES Full \$15.00
FA \$10.00
RATING 16+
INFO/TIX fringe.co.nz

DATES MAR 1 2 3 4 5 6 7 8 9 10 11 12 13 14 15 16 17 18 19 20 21 22 23



WORM

PHOEBE HURST (NZ) **THEATRE; COMEDY; OTHER**

WORM has emerged. And it wants to play with its new friend - you.

Like Mr. Bean on LSD, Phoebe Hurst's interactive physical comedy is sure to delight and disturb.

VENUE BATS Theatre - The Random Stage
TIME 8.30pm (60min)
PRICES Full \$22.00
C/Stu \$17.00
FA \$15.00
RATING 16+
INFO/TIX bats.co.nz

DATES MAR 1 2 3 4 5 6 7 8 9 10 11 12 13 14 15 16 17 18 19 20 21 22 23



MOUTHS OF ILLUSION

BEYOND THE MACHINE

VIDEO AND PHYSICAL INSTALLATION

BEYOND THE MACHINE

BEYOND THE MACHINE

BEYOND THE MACHINE

BEYOND THE MACHINE

BEYOND THE MACHINE

BEYOND THE MACHINE

BEYOND THE MACHINE

BEYOND THE MACHINE

MOUTHS OF ILLUSION

Wellington + Sydney video artists, musicians, sculptors, writers, actors Nicholas Kealey and Nicholas Frost are MOUTHS OF ILLUSION. Where public space for art is competitive, cliquey or tendentious, we critique the character of MACHINE - the technological, consumerist, medial, cultural, spiritualist paradigms and propagandas of this culture. Cut-through soundbites - MANTRAS told by big-brother guru faces - soothe a world of minimum attention-span, instant body-soul gratification, conformism to utopian beliefs, need to be 'liked', want for continuous superficial happiness without its necessary opposites. BIG SCALE VIDEO plus text, sculpture and sound deliver obsessive messaging. Sensory-erotic -intellectual lures deliver the ironies of hypnosis and alienation. Gratify your transcendent wanting with hypnotic wise cool propagandist dystopian machine MANTRA THERAPY.

**SATURDAY 29 FEBRUARY
TO SUNDAY 15 MARCH**

**37 COURTENAY PLACE
[Courtenay Studios]**

10am to 10pm everyday

VIDEO AND PHYSICAL INSTALLATION

www.mouthsofillusion.com
www.photospacegallery.nz
nick.kealey@xtra.co.nz
04 237 4868
nfrost@odp.com.au
022 474 6530

NAUGHTY BITS



Shows for our R18 friends, the following pages could well contain nudity, swears and all the stuff you don't want the kids to know about just yet...

EVENTS

PO PO MO CO PRESENT
FLUTTER AND FLOUNCE

PO PO MO CO (AU) COMEDY; PHYSICAL THEATRE

VENUE BATS Theatre - The Random Stage
TIME 8.30pm (60min)
PRICES Full \$25.00
 C/Stu \$20.00
 FA \$17.00
RATING 16+
INFO/TIX bats.co.nz



Physical comedy X queer sketch X eccentric dance.

Award winning queer darlings PO PO MO CO finally hit New Zealand! Bodies are on the line with a neo-vaudevillian delicatessen of serious stupidity.

'They are triple threats... and triple tits.' - Stage Whispers

DATES | MAR

S	M	T	W	T	F	S	S	M	T	W	T	F	S	S	M	T	W	T	F	S	S	M
1	2	3	4	5	6	7	8	9	10	11	12	13	14	15	16	17	18	19	20	21	22	23



100% WRONG

D'BEAR PRODUCTIONS (US) CABARET; COMEDY; LGBTQIA+

Putting the sex back in inter-sectional, Neil D'Bear Thornton curates a gender-diverse evening of the darkest, dirtiest, and funniest routines from the Fringe's best comedians, drag stars, burlesquers, storytellers and more. Leave your sacred cows at home.

VENUE The Fringe Bar
TIME 8.30pm (75min)
PRICES Full \$20.00
 C/Stu \$15.00
 FA \$14.00
RATING 18+
INFO/TIX fringe.co.nz

DATES | MAR

S	M	T	W	T	F	S	S	M	T	W	T	F	S	S	M	T	W	T	F	S	S	M
1	2	3	4	5	6	7	8	9	10	11	12	13	14	15	16	17	18	19	20	21	22	23

ADULTS ONLY MAGIC SHOW

SHOWMEN PRODUCTIONS (AU) THEATRE; COMEDY; OTHER

"The Penn & Teller of Australia!" Glam Adelaide
 ★★★★★
 Get ready to take magic to a whole new level in this spicy new show! Following a SOLD OUT run of shows overseas, The Showmen are debuting this brand new spectacle; and this time, it's for the ADULTS ONLY!

VENUE Fat G (Fringe at the Gryphon)
TIME 6.00pm (60min)
PRICES Full \$33.00
 C/Stu \$27.00
 FA \$23.50
 6+ \$25.00
RATING 18+
INFO/TIX fringe.co.nz

DATES | MAR

S	M	T	W	T	F	S	S	M	T	W	T	F	S	S	M	T	W	T	F	S	S	M
1	2	3	4	5	6	7	8	9	10	11	12	13	14	15	16	17	18	19	20	21	22	23



AWARDLESS!

KITCHENS.INC (NZ) COMEDY

Starting with a punk musical about gardening and ending on a routine about a traffic cone which is probably too long, Simon Kingsley-Holmes proves he doesn't care about awards but he really, really does want one!

VENUE Welsh Dragon Bar
TIME 8.00pm (60min)
PRICES Full \$10.00
 C/Stu \$5.00
 FA \$7.00
RATING 16+
INFO/TIX fringe.co.nz

DATES | MAR

S	M	T	W	T	F	S	S	M	T	W	T	F	S	S	M	T	W	T	F	S	S	M
1	2	3	4	5	6	7	8	9	10	11	12	13	14	15	16	17	18	19	20	21	22	23

THE BITCHELORETTE

KATE SPENCER (NZ) SPOKEN WORD/STORYTELLING; COMEDY; LGBTQIA+

A punk poetic satire.

When calls went out for the first female star of TVNZ's The Bachelorette, Kate decided to challenge the patriarchal concepts and applied with all her feminist fury. Welcome, witness, and be wooed with words of wit and wisdom from Wellington's wildest woman.

VENUE The Fringe Bar
TIME 7.00pm (60min)
PRICES Full \$18.00
 C/Stu \$15.00
 FA \$12.00
RATING 18+
INFO/TIX fringe.co.nz

DATES | MAR

S	M	T	W	T	F	S	S	M	T	W	T	F	S	S	M	T	W	T	F	S	S	M
1	2	3	4	5	6	7	8	9	10	11	12	13	14	15	16	17	18	19	20	21	22	23

BEYOND THE PALE

GARAGE PROJECT OTHER

It's that time again, time for something less ordinary.

Now a Garage tradition, every year Beyond the Pale celebrates New Zealand's own wonderful Fringe Festival with an unorthodox foray into the weird and wonderful. Keep your eyes, and taste buds, on the lookout for what 2020 will bring.

VENUE Garage Project
PRICES Full \$13.00
RATING 18+
INFO/TIX fringe.co.nz



ADELAIDE FRINGE

ARTIST REGISTRATIONS OPEN AUGUST 2020 for 2021 Adelaide Fringe

adelaidefringe.com.au



DAZZA AND KEIF GO VIRAL

TOM BACKHAUS (AU) **DANCE; COMEDY; LGBTQIA+**

Dazza and Keif have one mission in life: to become Youtube famous for their sick breakdance skillz. The problem is, their only follower is Dazza's Mum. So how will these clueless dudes cope when an embarrassing viral video thrusts them into the spotlight for all the wrong reasons?

VENUE Fat G (Fringe at the Gryphon)
TIME 9.00pm (50min)
PRICES Full \$22.00
C/Stu \$16.00
FA \$15.00
RATING 16+
INFO/TIX fringe.co.nz

DATES MAR 1 2 3 4 5 6 7 8 9 10 11 12 13 14 15 16 17 18 19 20 21 22 23



DECLARATIONS OF LOVE (AND OTHER USELESS THINGS)

TEMPEST THEATRE CO (NZ) **THEATRE; COMEDY; LITERATURE**

Part solo work, part deranged literotic raving, this show's rewriting romance fiction for the modern era. Brought to life with music, ballroom dance, and consensual objectification, it might just make you reconsider that Mills & Boon novel you found on your aunt's bookshelf.

VENUE Te Auaha - Tapere Iti
TIME 8.00pm (55min)
PRICES Full \$17.00
C/Stu \$15.00
FA \$13.00
RATING 16+
INFO/TIX fringe.co.nz

(Not like that.)

DATES MAR 1 2 3 4 5 6 7 8 9 10 11 12 13 14 15 16 17 18 19 20 21 22 23



GENDEROTICA: THE BIRDS AND THE TREES

ZIR PRODUCTIONS (NZ) **SPOKEN WORD/STORYTELLING; COMEDY; LGBTQIA+**

ONE NIGHT ONLY. Transgender couple Ren Lunicke (non-binary) and Willow Lunicke (transwoman) already had amazing sex lives, but with swapped estrogen and testosterone, some adjustments may be ecstasy. These true sex and sensuality stories were too much for their all-ages Fringe Debut: SHE + THEY (see program).

VENUE Ivy Bar and Cabaret
TIME 9.30pm (50min)
PRICES Full \$20.00
C/Stu \$15.00
FA \$15.00
RATING 18+
INFO/TIX fringe.co.nz

DATES MAR 1 2 3 4 5 6 7 8 9 10 11 12 13 14 15 16 17 18 19 20 21 22 23



bluestar.co.nz
Making
Print
Better

Sue Footitt 021 514 297
Sue.Footitt@bluestar.co.nz
33-43 Jackson Street, Petone

LIVE NUDE CLOWNS

AMIE WEE (AU) **THEATRE; COMEDY; LGBTQIA+**

Amie Wee has spent a third of her life working in the New Zealand porn industry. She's edited gangbang porn with a hangover, retouched thousands of bumholes and once was paid to babysit Ron Jeremy for 36 hours. You'll never look at a lubricated hotdog the same way again.

VENUE Ivy Bar and Cabaret
TIME 7.30pm (55min)
PRICES Full \$25.00
C/Stu \$22.00
FA \$18.00
RATING 18+
INFO/TIX fringe.co.nz

DATES MAR 1 2 3 4 5 6 7 8 9 10 11 12 13 14 15 16 17 18 19 20 21 22 23



RIOT! A QUEER CABARET

VAUDEVILLE INK (NZ) **CIRCUS; CABARET; LGBTQIA+**

Witness the weirdest in a showcase of Aotearoa's queer cabaret talent! Having scandalized our way around the country over 2019, Riot are back to kick off your Fringe Fest with two unique nights of burlesque, music, mayhem, circus, sleaze, and unspeakable acts. It's gonna be a Riot!

VENUE The Fringe Bar
TIME 8.00pm (90min)
PRICES Full \$30.00
C/Stu \$20.00
FA \$21.00
RATING 18+
INFO/TIX fringe.co.nz

DATES FEB 27 28 29 MAR 1 2 3 4 5 6 7 8 9 10 11 12 13 14 15 16 17



A BRAND NEW SHOW FROM A RELIABLE SOURCE

LASER
KIWI #2

TE AUHAHA
TAPERE NUI
17-21 MARCH 7:30

WHAT PEOPLE SAID ABOUT THE FIRST SHOW

★★★★★
'FALL-DOWN FUNNY &
ABSOLUTELY TOP SHELF'
THE ADVERTISER, ADS

★★★★★
'I CANNOT RECOMMEND
THIS SHOW ENOUGH'
BLAMABLE ADIC, ADS





THE HEART OF THE FRINGE

FEB 28 29
F S

MARCH 1 2 3 4 5 6 7 8 9 10 11
S M T W T F S S M T W

			LIQUID SPIRIT 6.30PM			ENOUGH 6.30PM					LEGEND 6.30PM			PRINCESS BOY WONDER 6.30PM						
DIGGING TO CAMBODIA 7PM *STARTS 25 FEB		COCKROACH 7PM			#USTWO 7PM			SHOULD'VE SAID NO 7PM			SHOULD'VE SAID NO 7PM			PUBERTY: THE MUSICAL 7PM			DEEP AND MEANINGFUL 7PM		STANDARD ACTS 7PM	
2020 VISIONS 7.30PM		2020 VISIONS 7.30PM			LITA 7.30PM				CHOOSE YOUR OWN LIFE 7.30PM			CHOOSE YOUR OWN LIFE 7.30PM				MARAMATAKA 7.30PM				
TEN AND TWO THIRDS 8.30PM		TEN AND TWO THIRDS 8.30PM		FLUTTER AND FLOUNCE 8.30PM			TRANSHUMANCE 8.30PM			TRANSHUMANCE 8.30PM			WAITING FOR SHARK WEEK 8.30PM			WORM 8.30PM				
MY STUPID F*CKING HEART 9PM		MY STUPID F*CKING HEART 9PM		THE BEST SHOW IN TOWN IS AT YOUR PLACE EVERY NIGHT 9PM			ODDACITY 9PM			WHY ME? 9PM			WHY ME? 9PM		GIRLZ ON DRUG\$ 9PM			BUTCHER HOLLER HERE WE COME 9PM *RUNS UNTIL 28 MARCH		
						D&D LIVE 10PM		JOFUS AND THE PLANK 9.30PM					I'M WALKEN HERE 9.30PM							
													GRINGO DEVIL 11PM							

BATS THEATRE | 1 KENT TCE | BOOK AT BATS.CO.NZ

- THE RANDOM STAGE
- THE HEYDAY DOME
- THE STUDIO

THE FRINGE FESTIVAL
HAS BEEN PULSING THROUGH
OUR VEINS SINCE 1990

PLEASE NOTE ALL SUNDAY SHOWS START AN HOUR EARLIER

MARCH 12 13 14 15 16 17 18 19 20 21 22
T F S S M T W T F S S

BATS THEATRE | 1 KENT TCE | BOOK AT BATS.CO.NZ



- | | | |
|---|--|--|
| 01 42 Devon Street
42 Devon Street | 15 Heyday Beer Co.
264A Cuba Street | 29 Tarrant Dance Studios
125 Cuba Street |
| 02 93 Kelburn Parade
VUW Theatre Department,
93 Kelburn Parade | 16 Ivy Bar and Cabaret
63 Cuba Street | 30 Te Auaha
65 Dixon Street |
| 03 Aunty Dana's Op Shop
130 Riddiford Street | 17 J & M Fastfood
21 Courtenay Place | 31 Te Whaea Dance and Drama Centre
11 Hutchison Road |
| 04 BATS Theatre
1 Kent Terrace | 18 Luke Scott's Little Theatre of Big Dreams
Secret Location | 32 The Fringe Bar
26-32 Allen Street |
| 05 Cavern Club
22 Allen Street | 19 Malvina Major Retirement Village
134 Burma Road | 33 The PowWow Room
Level 1, 74 Courtenay Place |
| 06 Circa Theatre
1 Taranaki Street | 20 Newtown Community and Cultural Centre
7 Colombo Street | 34 The Third Eye
30 Arthur Street |
| 06 Circus Bar
17b Allen Street | 21 Prefab Hall
14 Jessie Street | 35 Valhalla
152 Vivian Street |
| 08 Courtenay Place | 22 Pyramid Club
272 Taranaki Street | 36 Waitoa Victoria Street
175 Victoria Street |
| 09 Courtenay Studios
37 Courtenay Place | 23 Raglan Roast Coffee
40 Abel Smith Street | 37 Wellington Chocolate Factory
5 Eva Street |
| 10 Credenza
Level 2, 40 Taranaki Street | 24 San Fran
171 Cuba Street | 38 Wellington Railway Station
Bunny Street |
| 11 Cuba Street | 25 St Andrew's on The Terrace
30 The Terrace | 39 Wellington School of Drawing
166a Cuba Street |
| 12 D4 on Allen
25 Allen Street | 26 St Peter's on Willis
211 Willis Street | 40 Wellington Waterfront |
| 13 Fat G (Fringe at the Gryphon)
22 Ghuznee Street | 27 Streets of Newtown | 41 Welsh Dragon Bar
10 Cambridge Terrace |
| 14 Garage Project
91 Aro Street | 28 Tararua Tramping Club
4 Moncrieff Street | |

VENUES

Remember to check the website for up-to-date venue information for events and secret location reveals.

AWARDS

Fringe celebrates artistic risk, innovation, and excellence.

Fringe celebrates artistic risk, innovation, and excellence. Each year a diverse panel of industry professionals scrutinise each show and fight it out to select a few stand out works for accolades. NZ Fringe award winners have gone on to do many great things with both the winning work and future creations, from permanent street installations to Hollywood blockbusters but it's not a competition. The awards are our way of supporting and encouraging continued growth and success in the arts in NZ and we thank the sponsors that make each of these awards possible.

DEVELOPMENT AWARDS

Fringe in the 'Stings Tour Award
Supported by Fringe in the 'Stings

Melbourne Fringe Tour Ready Award
Supported by Melbourne Fringe Festival and NZ Fringe with additional support from the Australian High Commission

The SYNZ Tour Ready Award
Supported by Sydney Fringe Festival and NZ Fringe with additional support from the Australian High Commission

Adelaide Fringe Tour Ready Award
Supported by Adelaide Fringe and NZ Fringe with additional support from the Australian High Commission

The International San Diego Fringe Exchange
Supported by San Diego Fringe and NZ Fringe

The Parkin Development Award
Supported by Chris and Kathy Parkin and BATS Theatre

International touring awards are made possible with support by CreativeNZ

2020 FRINGE AWARDS

Most Innovative Work
Supported by Wellington International Airport

The Grand Design Award
Supported by Inject Design

Outstanding Performance
Supported by Te Auaha

Stellar Original Content
Supported by Gibson Sheat

Momentum Movement

Most Promising Emerging Company
Supported by BATS Theatre

Most Promising Emerging Artist
Supported by EAT

Memorable Marketing
Supported by Phantom Billstickers

Spectacular Organised Chaos
Supported by Friends of the Fringe

Spirit of the Fringe
Supported by Creative Capital Arts Trust

Best in Fringe
Supported by His Worship the Mayor

Lifetime Fringe Soul
Awarded by NZ Fringe in recognition for ongoing services to Fringe and the Arts

The NZ Fringe awards are made possible by the generosity and tireless commitment of our judging panel, and by our partners and sponsors.

If you'd like to sponsor a Fringe award please contact Eric Holowacz: chief@ccat.org.nz



NEW ZEALAND SCHOOL OF DANCE

DIRECTOR: Garry Trinder MNZM

www.nzschoolofdance.ac.nz



DESIGN BY INJECT
INJECT.CO.NZ